



EFFICIENTLY ILLUMINATING YOUR WAY!

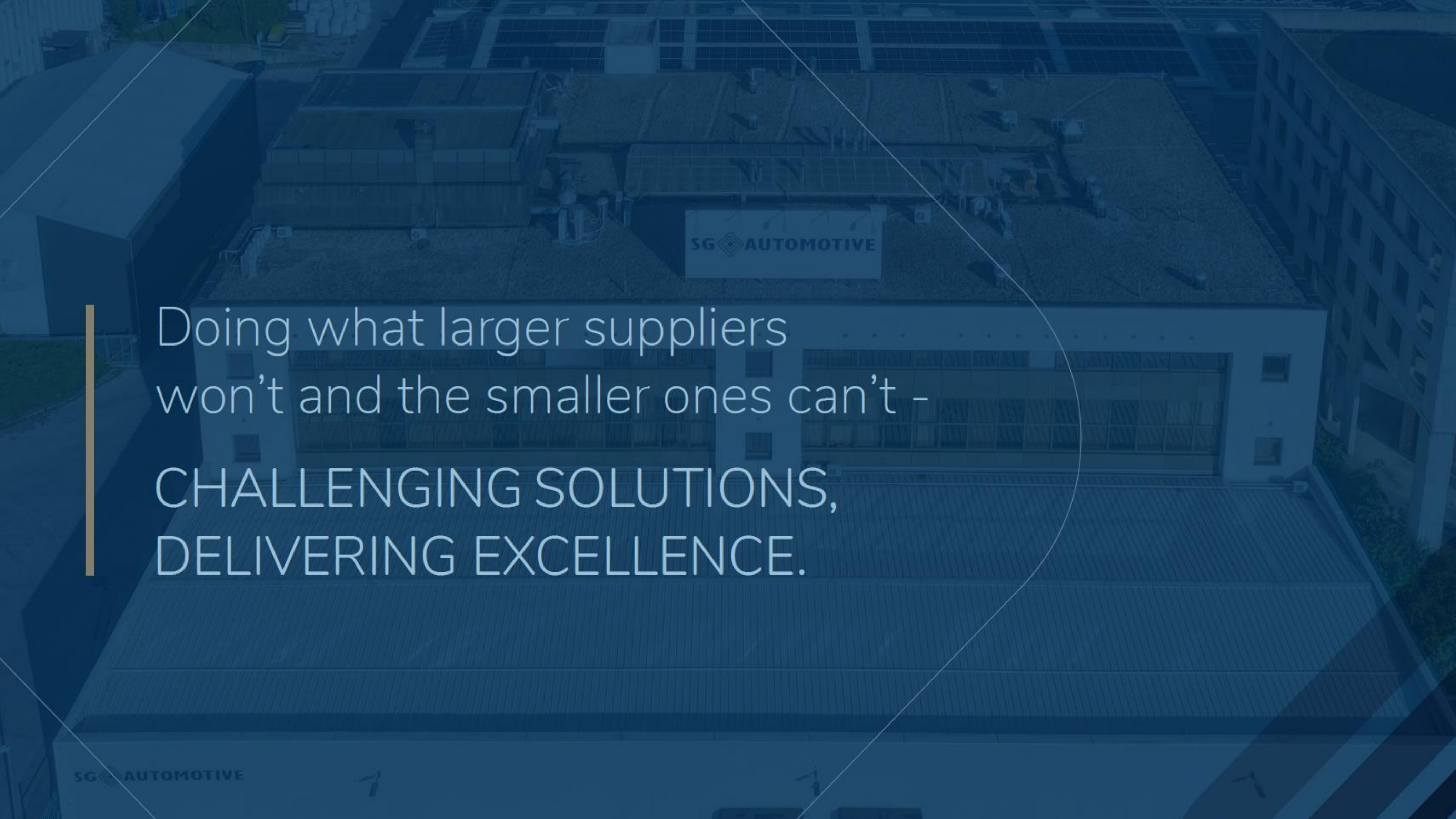
COMPANY PROFILE & PRODUCT
PORTFOLIO HIGHLIGHTS



**SLOVENIA IS STRATEGICALLY
POSITIONED AT THE HEART OF TWO
TRANS-EUROPEAN NETWORKS WITH
EXCELLENT INFRASTRUCTURE,
ICT, PLATFORMS:**

- › First-rate innovation capabilities
- › High-level expertise / low-cost labor
- › Multi-cultural, international know-how





Doing what larger suppliers
won't and the smaller ones can't -
CHALLENGING SOLUTIONS,
DELIVERING EXCELLENCE.

RESEARCH AND PRODUCTION **EXPERTISE** TO DEVELOP AND MANUFACTURE **HIGH-TECH ELECTRONICS QUICKLY AND EFFICIENTLY** ALL OVER THE WORLD:

- › Small, medium and large production series (also prototypes) with 4 SMT and 1 THT lines on more than 3.000 m²
- › Accompanying plastic housing and wire harnesses as end products.
- › Testing device development



YOU BENEFIT FROM **SG AUTOMOTIVE**
KNOW-HOW THAT IS **GROWING**
CONSTANTLY THROUGH **CO-**
OPERATIONS WITH OUR **WORLD-CLASS**
PARTNERS

- we develop trendsetting **technologies** that
are in use all over the world, via:

- > **Efficient processes from design to testing**
- > **Agile supply chain management**
- > **Transparent customer communication**
(e.g. regular coverage plans, **CBDs**,
financial status reports)
- > **Top quality (PPM rate 2.0)**

Mercedes-Benz



HILTI



EvoBus

MAGNA

METHODE
ELECTRONICS



odelo:
Automotive Signal Lights



motherson

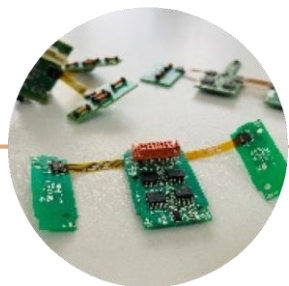
LOGICDATA
MOTION FOR YOUR LIFE



PRODUCT RANGE OVERVIEW

AUTOMOTIVE & E-MOBILITY

- > e-Mobility
- > Automotive Electronics
- > End Products



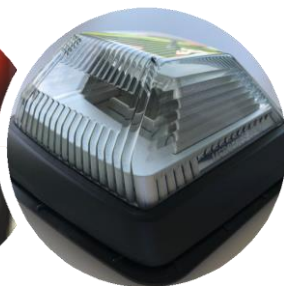
E-MOBILITY



AUTOMOTIVE

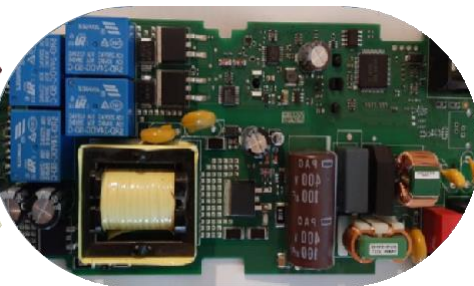


END PRODUCTS



FURNITURE SYSTEMS

- > Adjustable Height Desk Systems



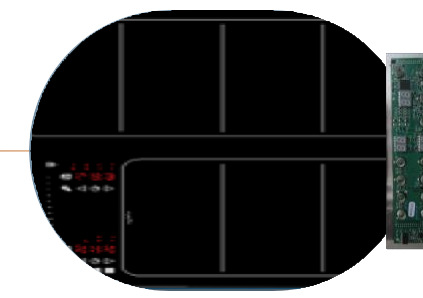
ADJUSTABLE CONTROL BOX SYSTEMS

HOME APPLIANCES

- > Small Appliances
- > Large Appliances



SMALL APPLIANCES



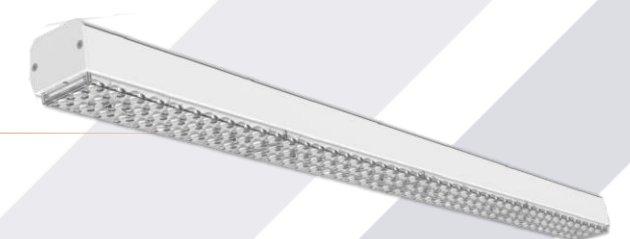
LARGE APPLIANCES

LED LIGHTING

- > Street Lighting
- > Industrial Lighting



LED STREET LIGHTING



LED INDUSTRIAL LIGHTING

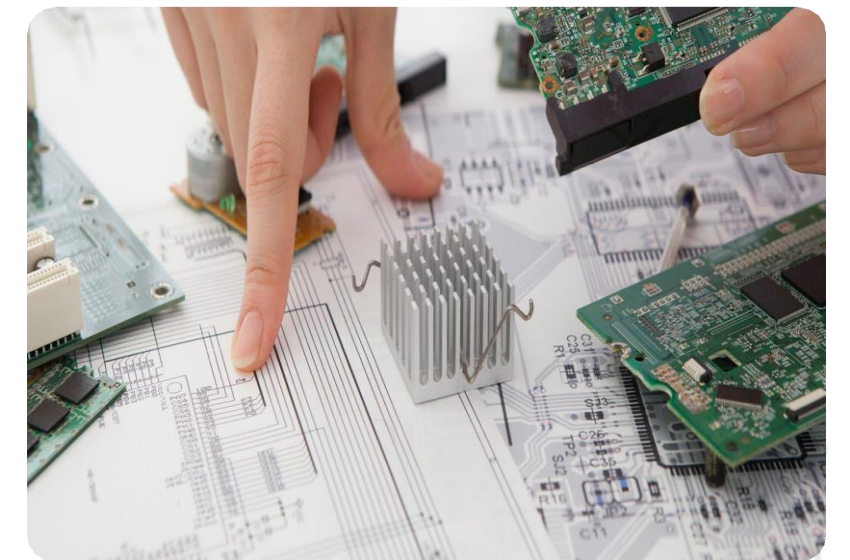
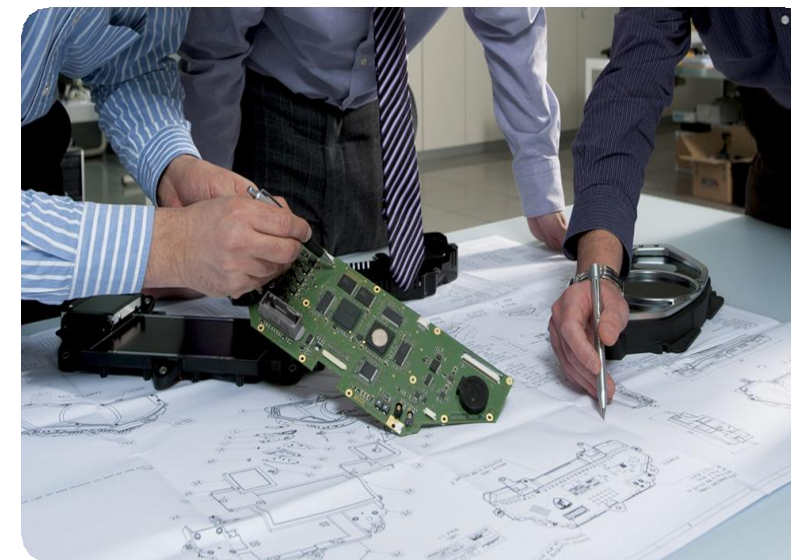


INTEGRATED DEVELOPMENT

ELECTRONIC AND MECHANICAL DESIGN R&D



- > PCB ELECTRONIC DESIGN
- > MECHANICAL DESIGN
- > HOUSINGS AND ENCLOSURES
- > WIRE HARNESSSES
- > TESTING DEVICE DEVELOPMENT

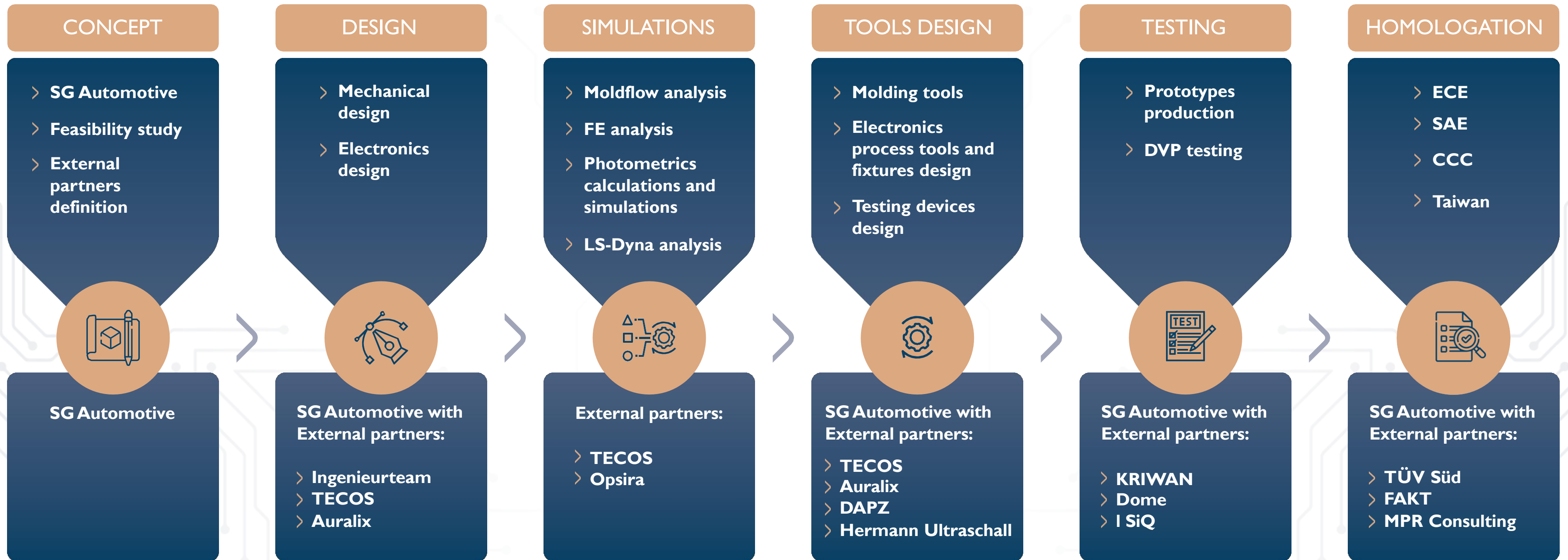


- > RESEARCH AND PRODUCTION **EXPERTISE** TO DEVELOP AND MANUFACTURE **HIGH-TECH INTEGRATED ELECTRONIC PRODUCTS**



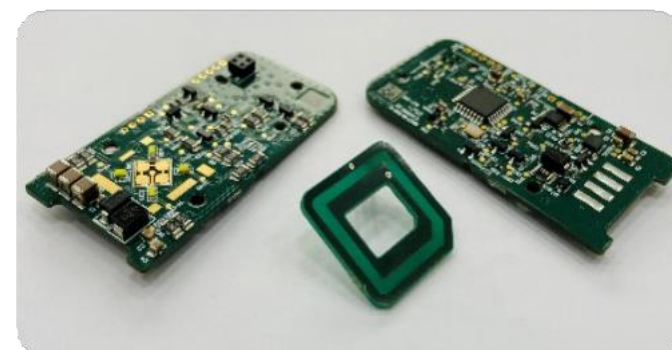
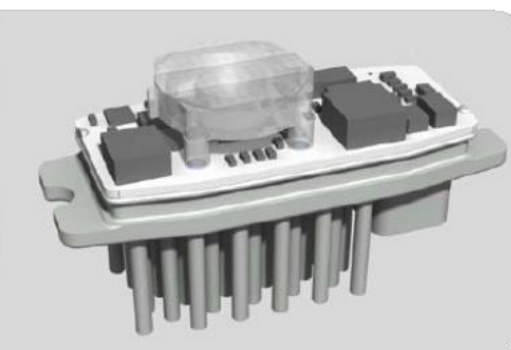
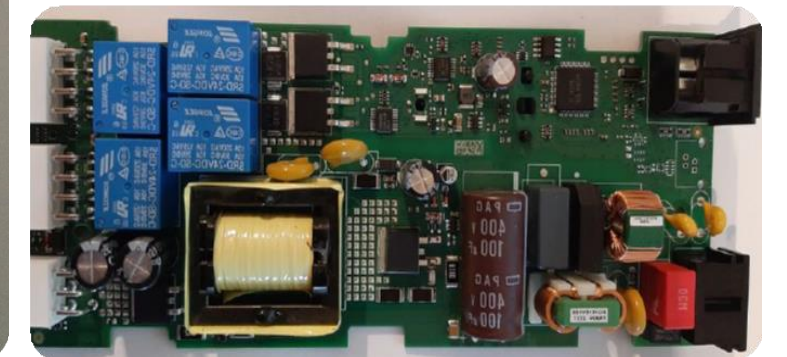
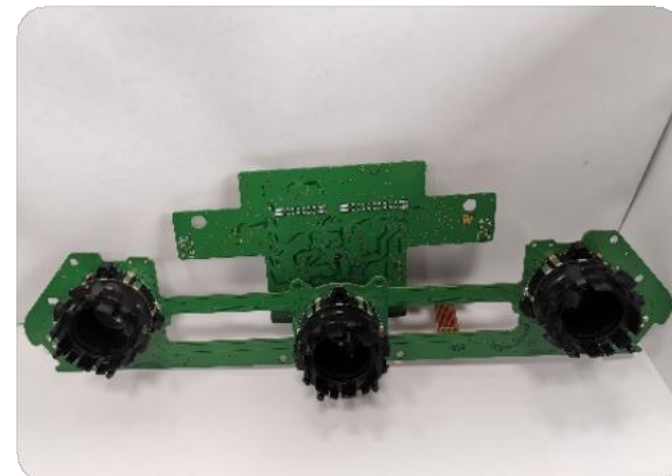
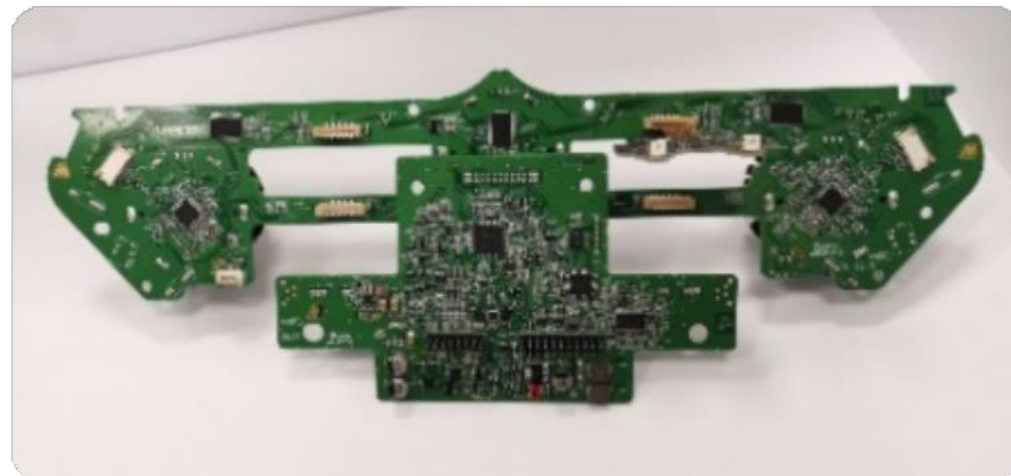
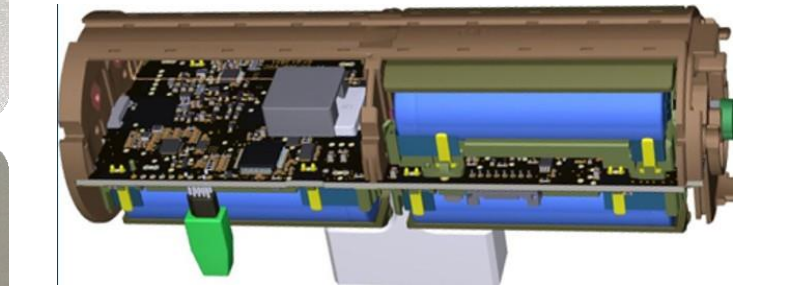
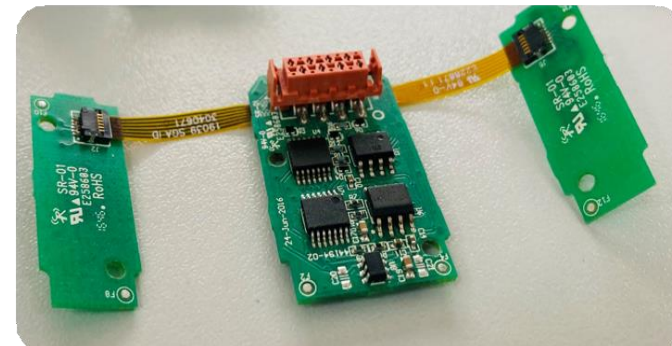
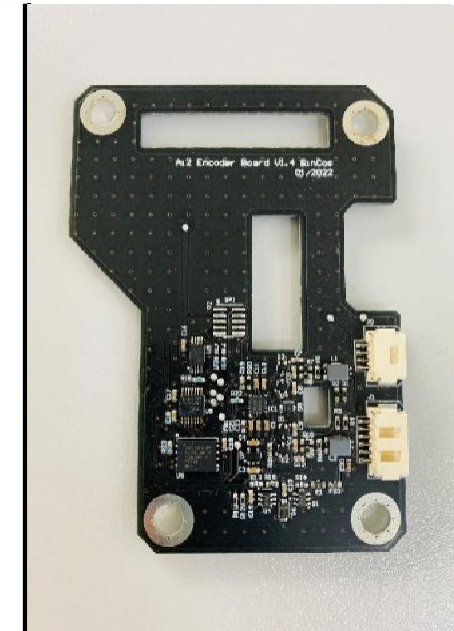
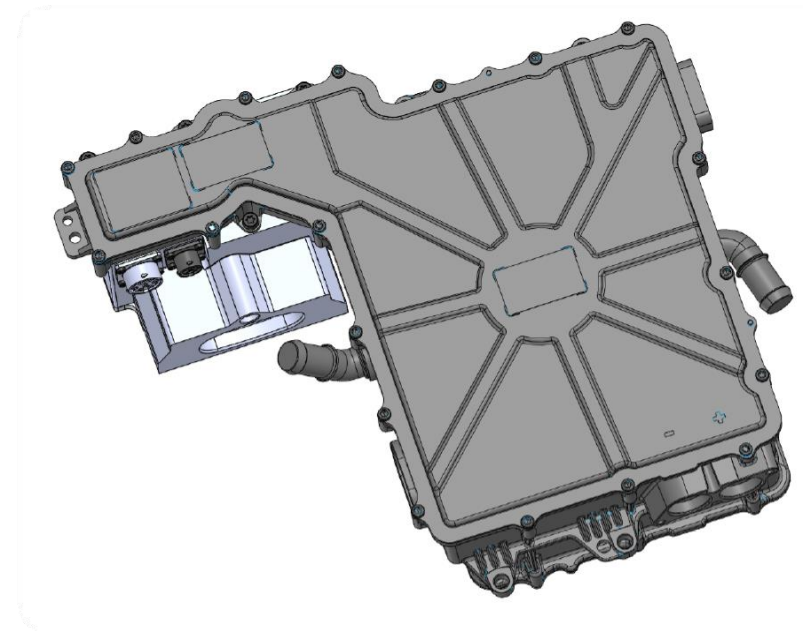
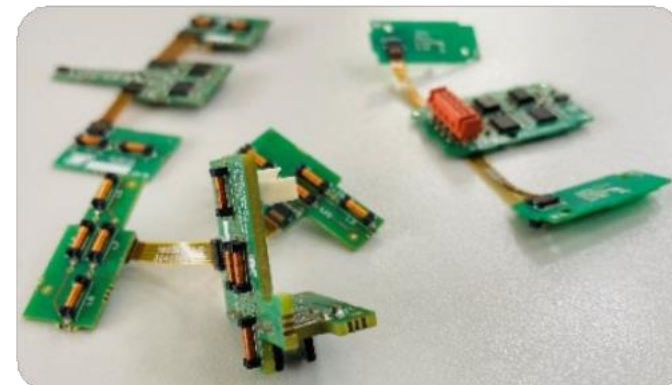
INTEGRATED DEVELOPMENT PATHWAY

SG AUTOMOTIVE PROJECT MANAGEMENT





PRODUCT PORTFOLIO HIGHLIGHTS



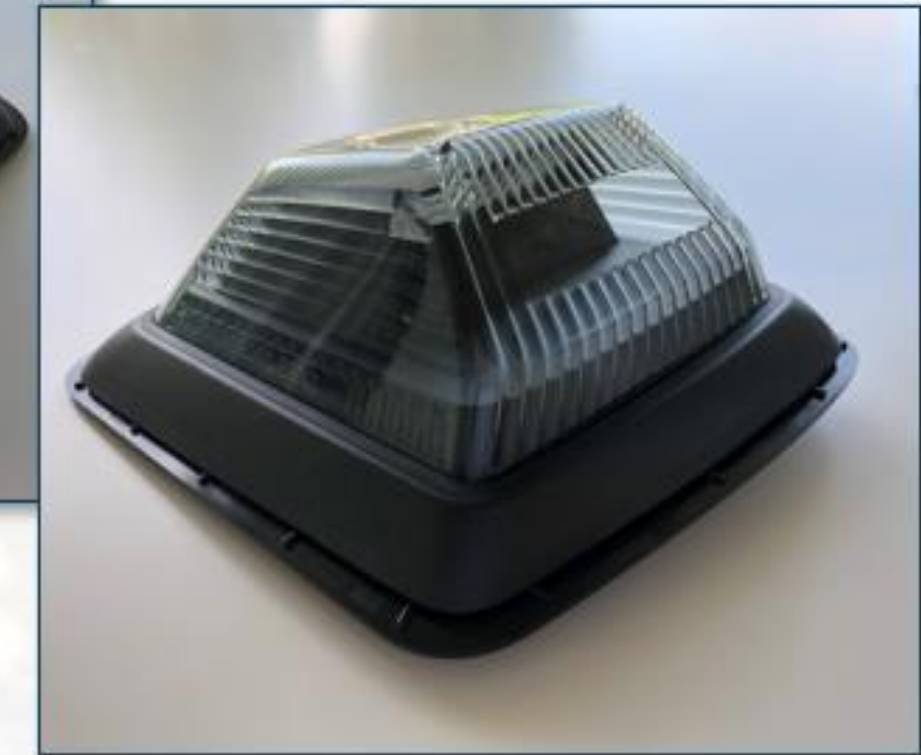
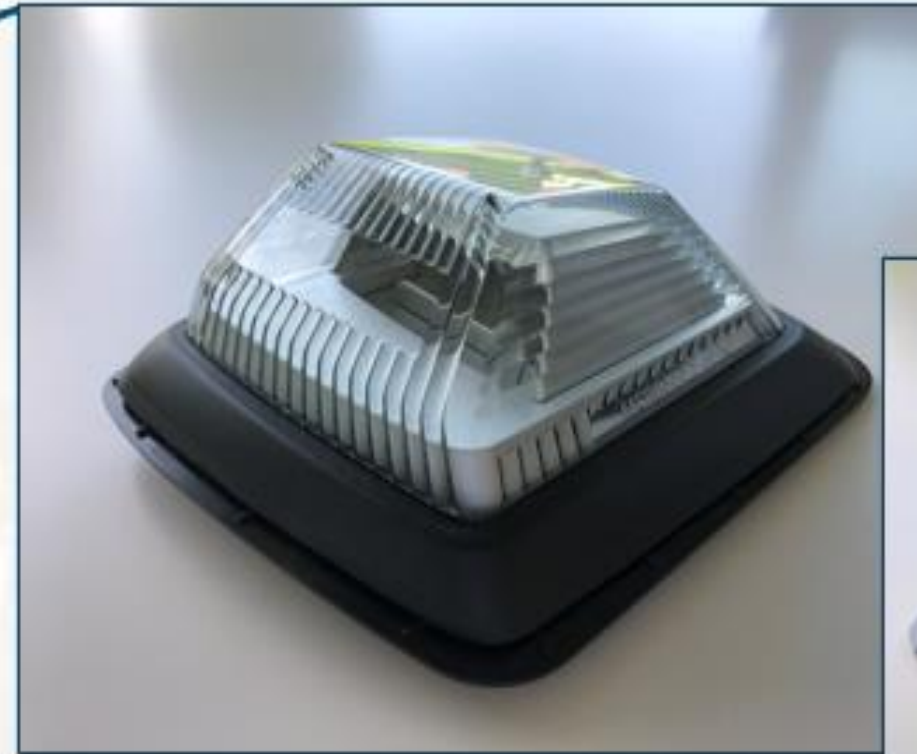


PRODUCT PORTFOLIO HIGHLIGHTS



Mercedes-Benz

G-Class



Project info:

- ✦ Project name: W463 MoPf – Direction indicator (cat. 01)
- ✦ Cars per year: 45,000 pcs
- ✦ Annual production: 90,000 pcs
- ✦ Production status: Active/serial production



PRODUCT PORTFOLIO HIGHLIGHTS



Mercedes-Benz

Sprinter



Project info:

- ◆ Project name: VS30 (W910) – Direction indicator (cat. 02)
- ◆ Cars per year: 5,000 pcs
- ◆ Annual production: 10,000 pcs
- ◆ Production status: Serial/special equipment



PRODUCT PORTFOLIO HIGHLIGHTS



Mercedes-Benz

Sprinter



Project info:

- ✦ Project name: VS30 (W910) – Direction indicator (cat. 02)
- ✦ Cars per year: 200 pcs
- ✦ Annual production: 400 pcs
- ✦ Production status: Serial/special equipment



PRODUCT PORTFOLIO HIGHLIGHTS



Daimler



Flashing warning light

PROJECT DEVELOPMENT OVERVIEW

Phase 1: development phase & prototypes

Phase 2: development in partnership with Odelo and sales to OEM

Phase 3: OEM developed and sold as TIER 1 supplier

Project info:

- ◆ Project name: WBL
- ◆ Annual production: 100,000 pcs
- ◆ Production status: Active/serial production



PRODUCT PORTFOLIO HIGHLIGHTS



Mercedes-Benz

W223



Project info:

- ✦ Project name: Motor with electronics for sun visor movement
- ✦ Technology: Hi-tech electronics with motor and wire harness
- ✦ Annual production: 100,000 pcs
- ✦ Production status: Active/serial production

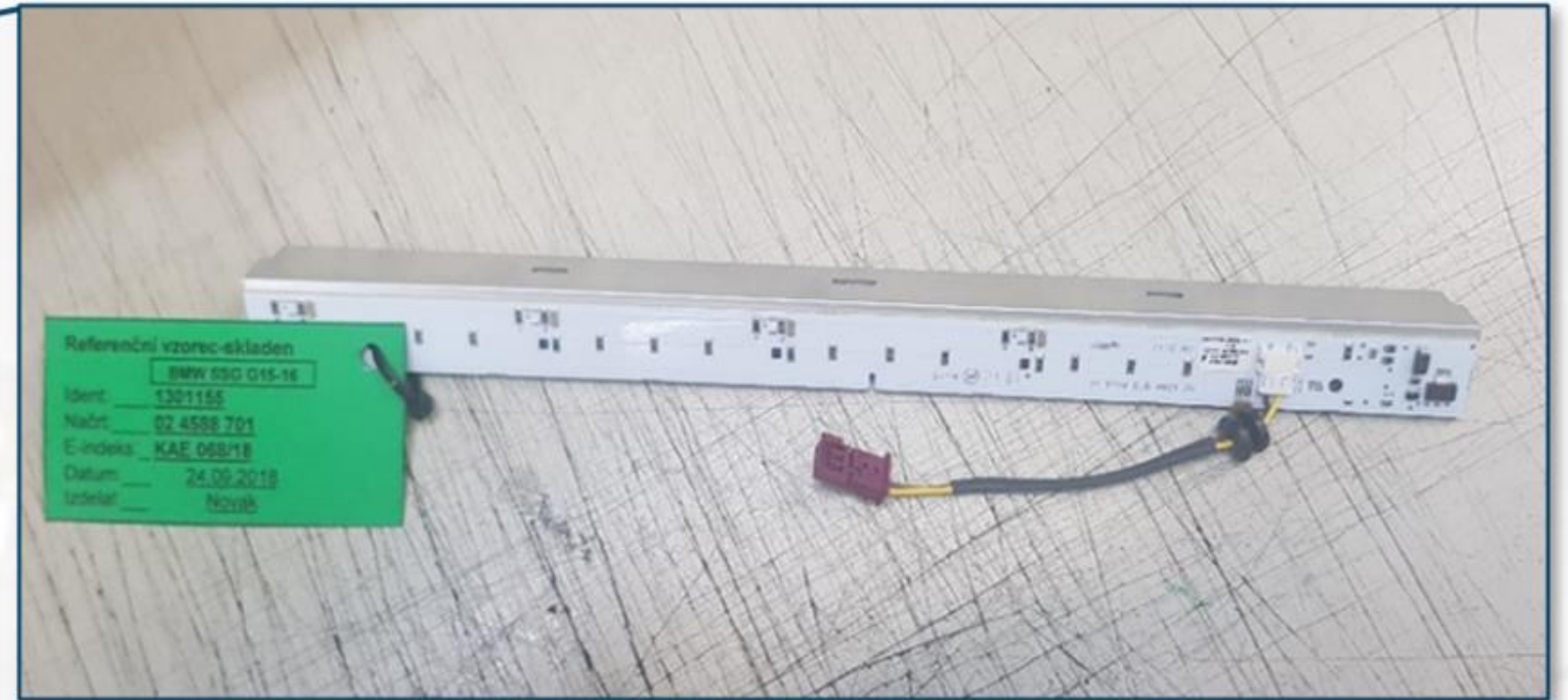


PRODUCT PORTFOLIO HIGHLIGHTS



BMW

Series 8

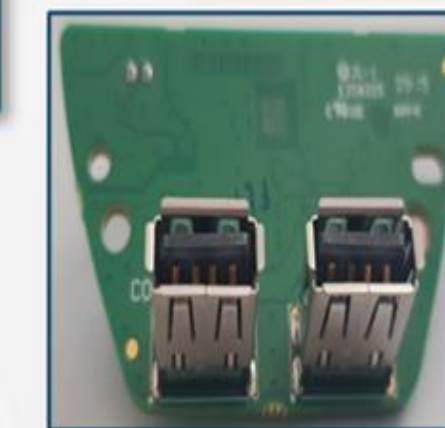
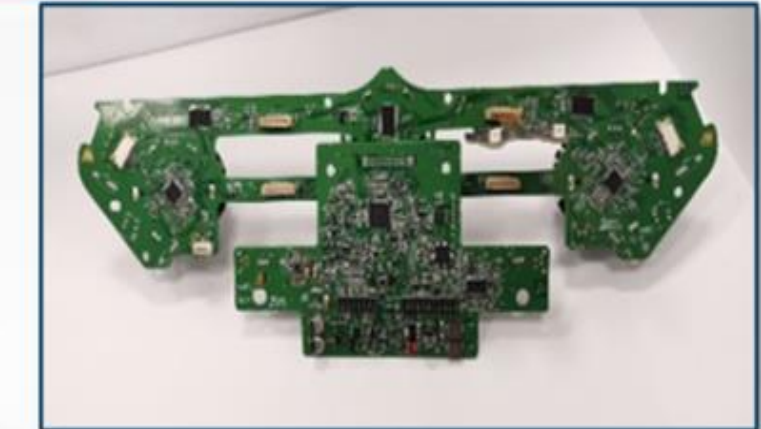


Project info:

- ✦ Project name: Break light for G14 and G15
- ✦ Annual production: 200,000 pcs
- ✦ Production status: Active/serial production



PRODUCT PORTFOLIO HIGHLIGHTS



Aston Martin

AM600/800

Project info:

- ✦ Project name: AM 600/800 – Front console electronics
- ✦ Project name: AM 600/800 – USB ports
- ✦ Annual production: 5,000 pcs
- ✦ Production status: Active/serial production



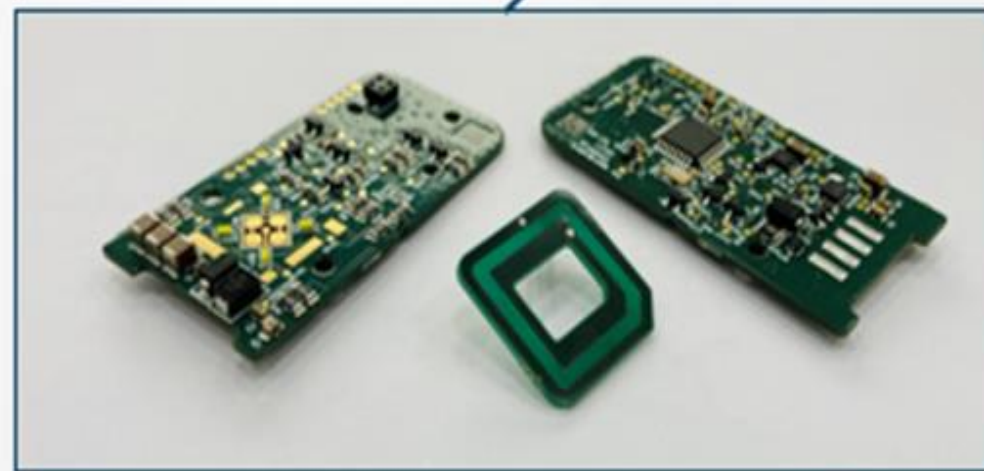
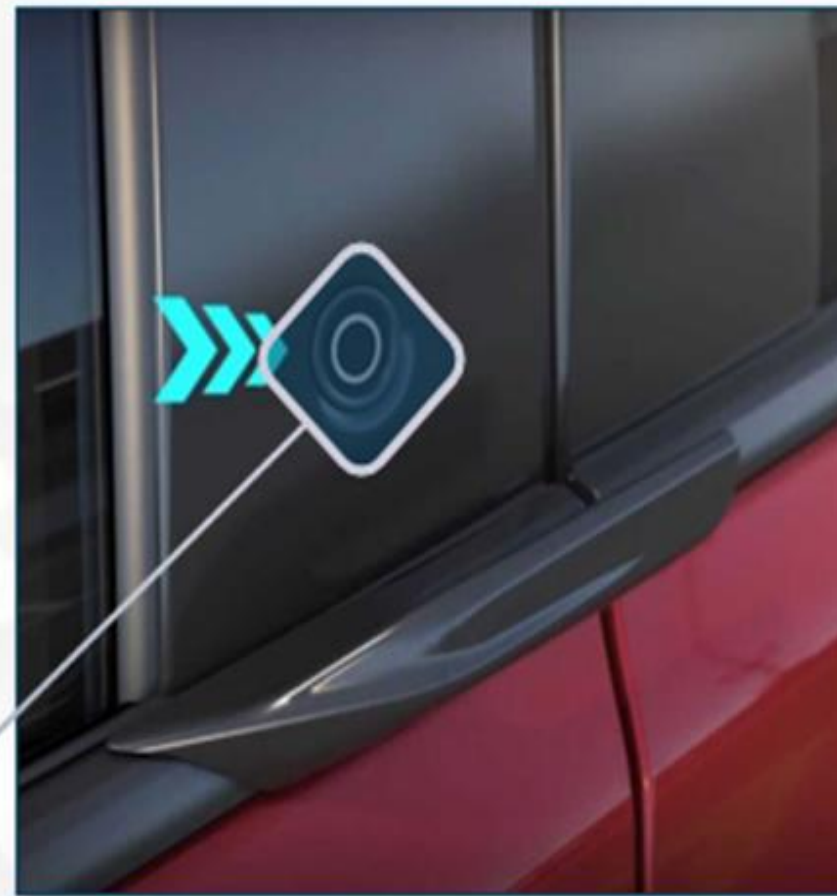


PRODUCT PORTFOLIO HIGHLIGHTS



Ford mach e

Mustang CX727



Project info:

- ◆ Project name: FORD DAS – Door Activation Switch
- ◆ Annual production: 500,000 pcs
- ◆ Production status: Active/serial production



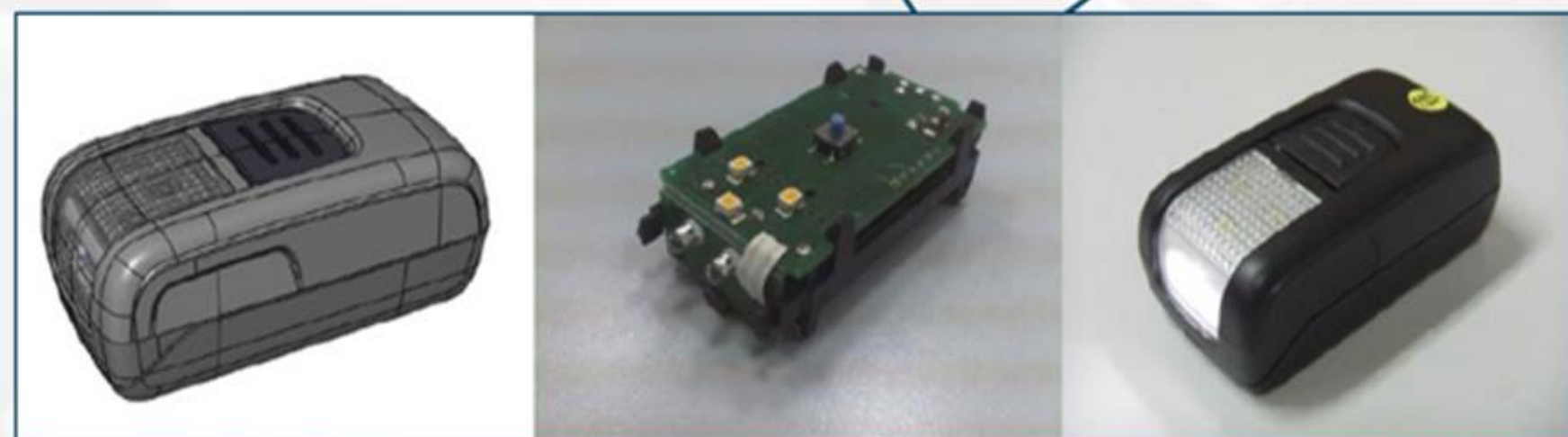
PRODUCT PORTFOLIO HIGHLIGHTS



Škoda

Superb & Fabia

Development of LED trunk light in cooperation with Škoda



Project info:

- ◆ Project name: Škoda Superb trunk light, Fabia to follow
- ◆ Light source: LED
- ◆ Annual production: 2,500 pcs
- ◆ Production status: Spare part

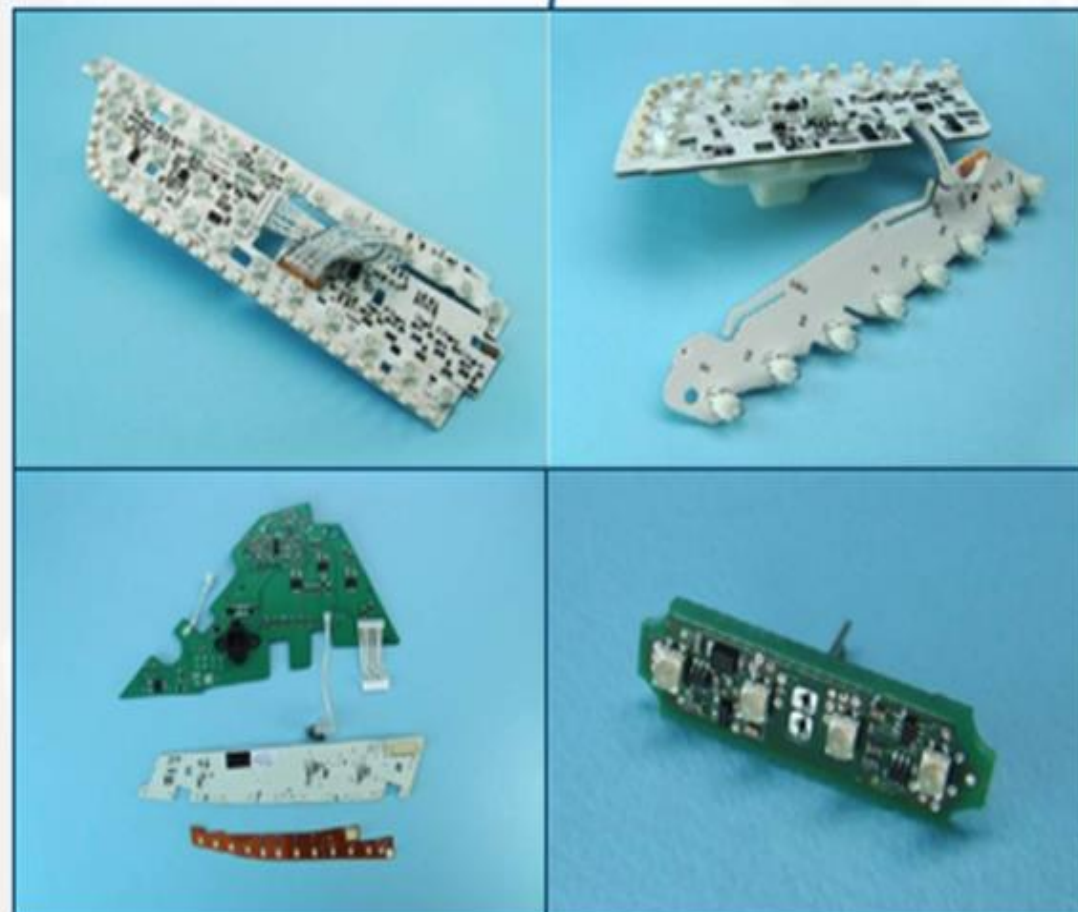


PRODUCT PORTFOLIO HIGHLIGHTS



Audi

Audi A7 and A6



Project info:

- ◆ Project name: Audi A6 Avant (C7), Audi A6 Limousine (C7), Audi A7 Sportback (C7)
- ◆ Annual production: 40,000 pcs
- ◆ Production status: Samples

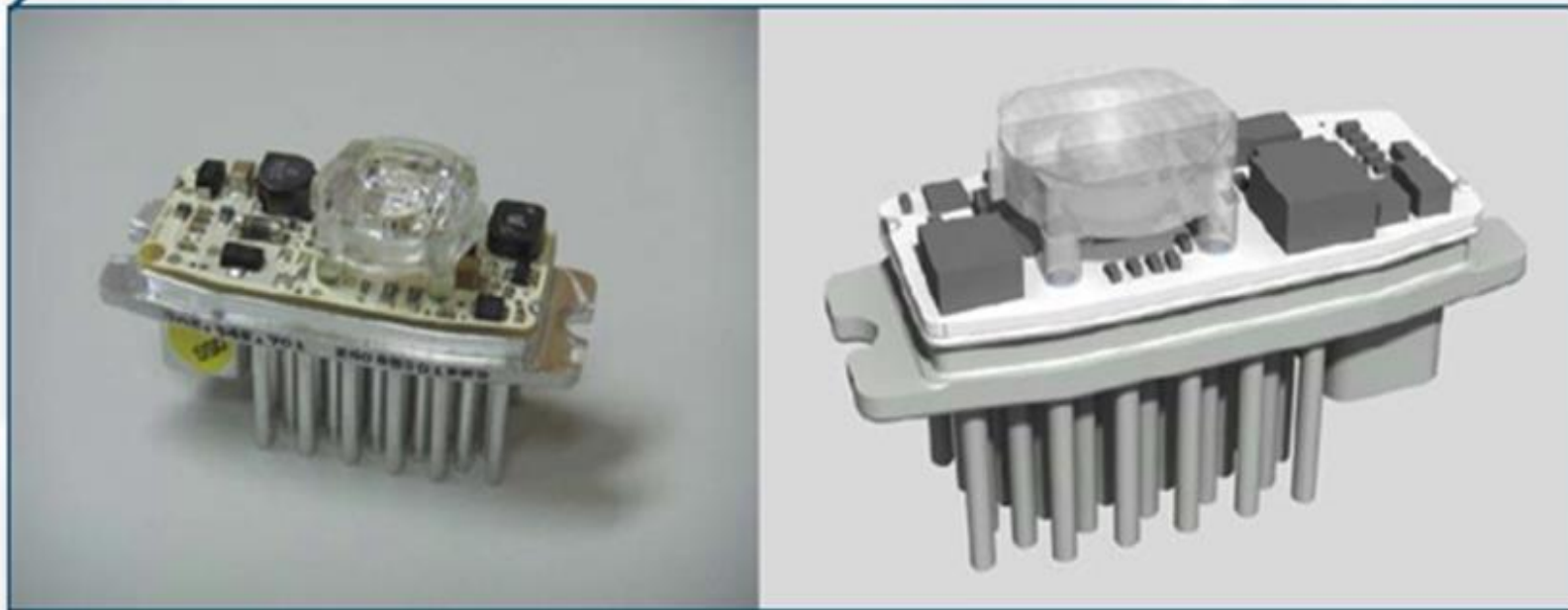


PRODUCT PORTFOLIO HIGHLIGHTS

Development of fog LED module together with VW



VW



Project info:

- ◆ Project name: New beetle II (5C), VW Passat (B7), New beetle (9C)
- ◆ Cars per year: 2,500 pcs
- ◆ Annual production: 5,000 pcs
- ◆ Production status: Spare part



PRODUCT PORTFOLIO HIGHLIGHTS



Mercedes-Benz

GLC – X253



Project info:

- ◆ Project name: Full rear light electronics (STI, break, position ...)
- ◆ Annual production: 16,000 pcs
- ◆ Production status: Active/serial production

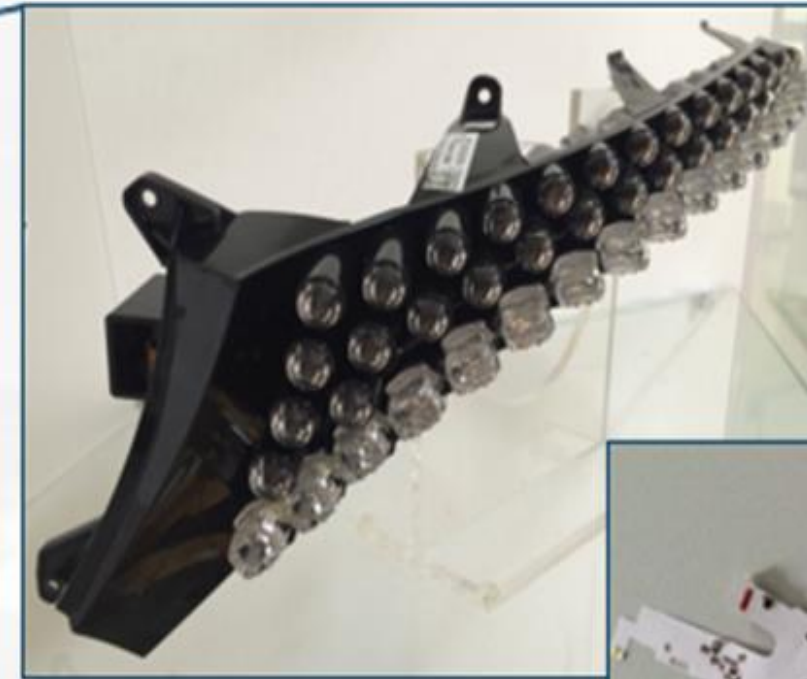


PRODUCT PORTFOLIO HIGHLIGHTS



Mercedes-Benz

S-Coupe



Project info:

- ✦ Project name: C-217 – Electronics for daytime running light Swarovski
- ✦ Cars per year: 3,000 pcs
- ✦ Annual production: 60,000 pcs
- ✦ Production status: EOL



PRODUCT PORTFOLIO HIGHLIGHTS



Porsche

911/ Boxter / Panamera



Project info:

- ◆ Project name: Porsche 911(997), Boxter (987), Panamera (970)
- ◆ Annual production: 200,000 pcs
- ◆ Production status: Spare part

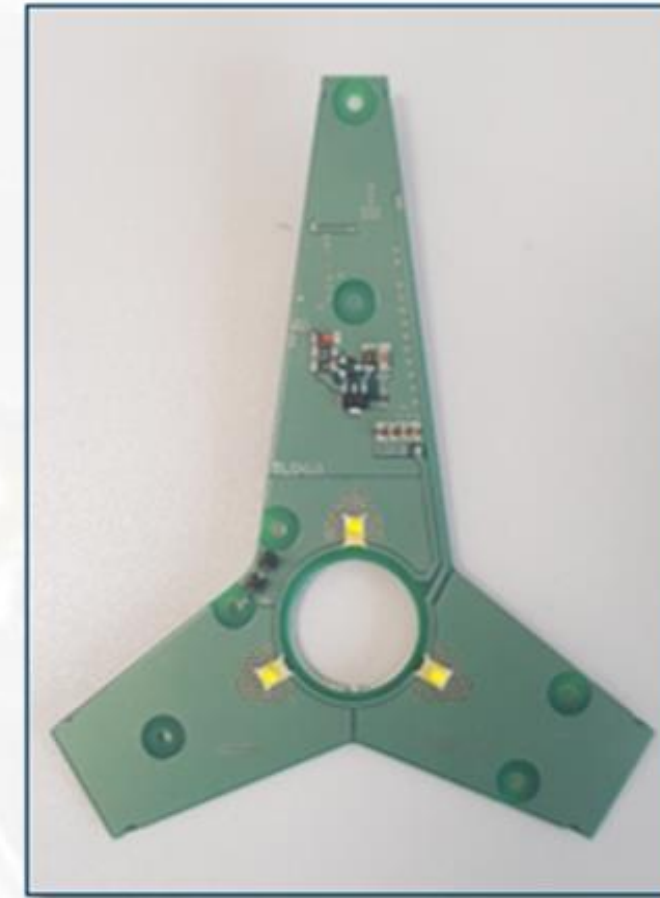


PRODUCT PORTFOLIO HIGHLIGHTS



Mercedes-Benz

G-Class, Daimler trucks

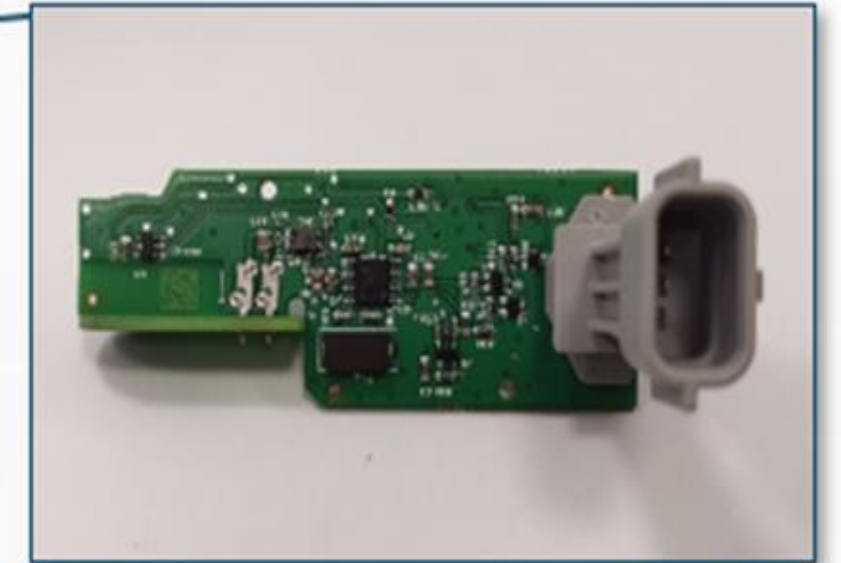
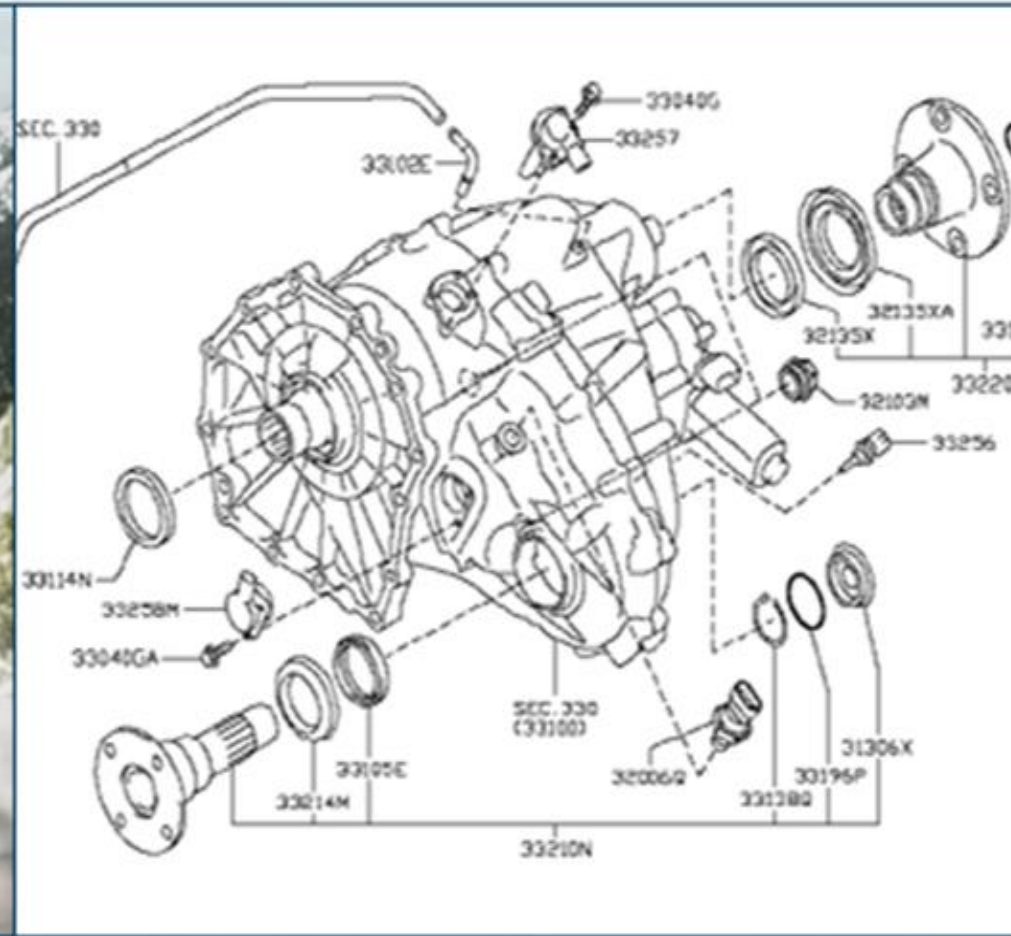


Project info:

- ◆ Project name: LED luminated Mercedes STAR
- ◆ Technology: LED Automotive Lighting
- ◆ Annual production: 10,000 pcs
- ◆ Production status: Serial



PRODUCT PORTFOLIO HIGHLIGHTS



Nissan

4x4 models

Project info:

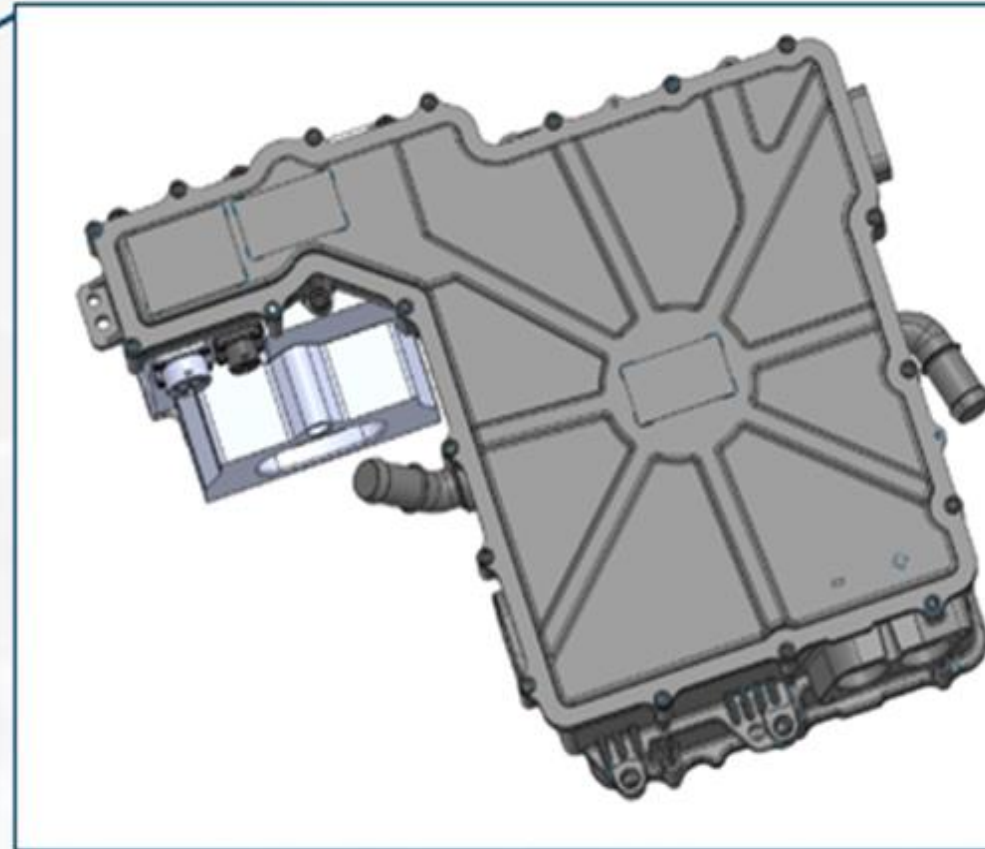
- ✦ Project name: Nissan 4x4 Gearbox – Lock sleeve sensor
- ✦ Annual production: 70,000 pcs
- ✦ Production status: Active/serial production



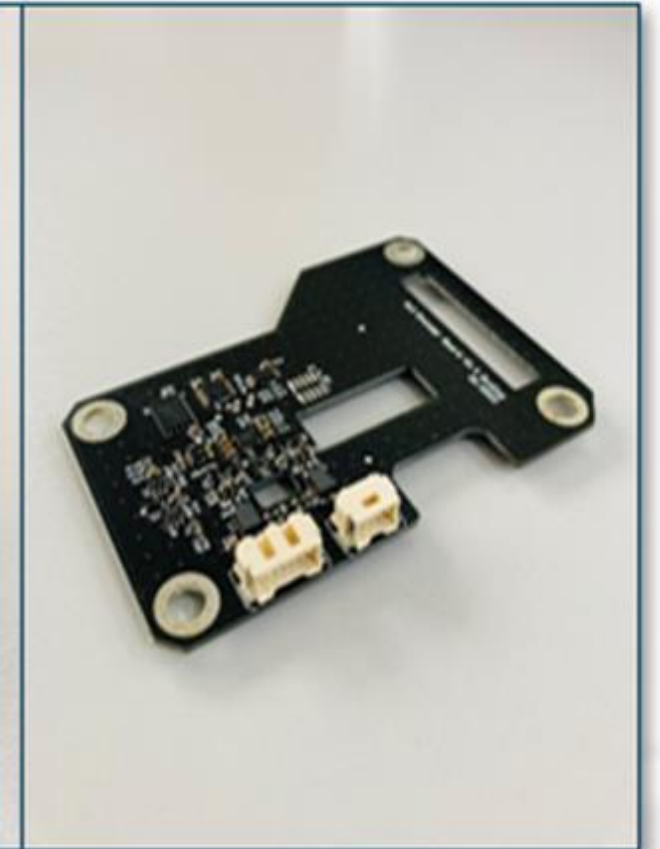
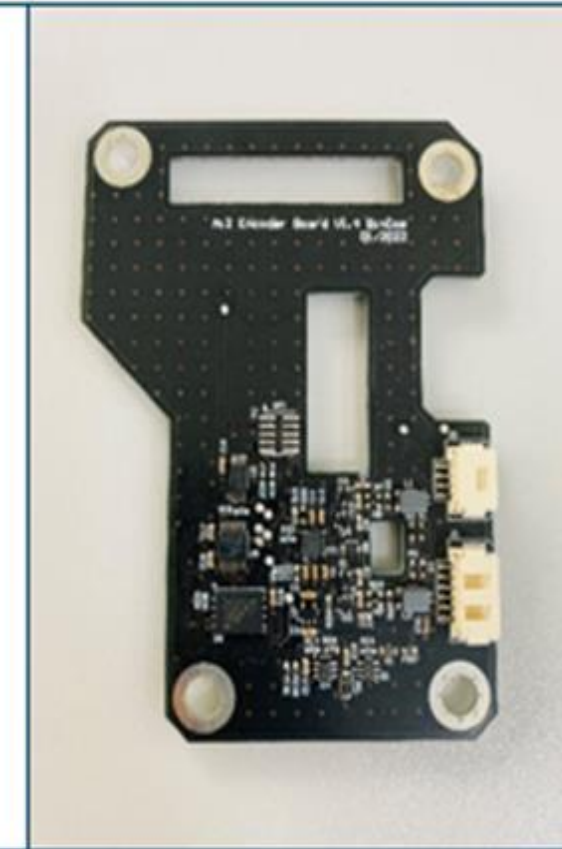
PRODUCT PORTFOLIO HIGHLIGHTS



Interface for in-wheel motor



Various super car models

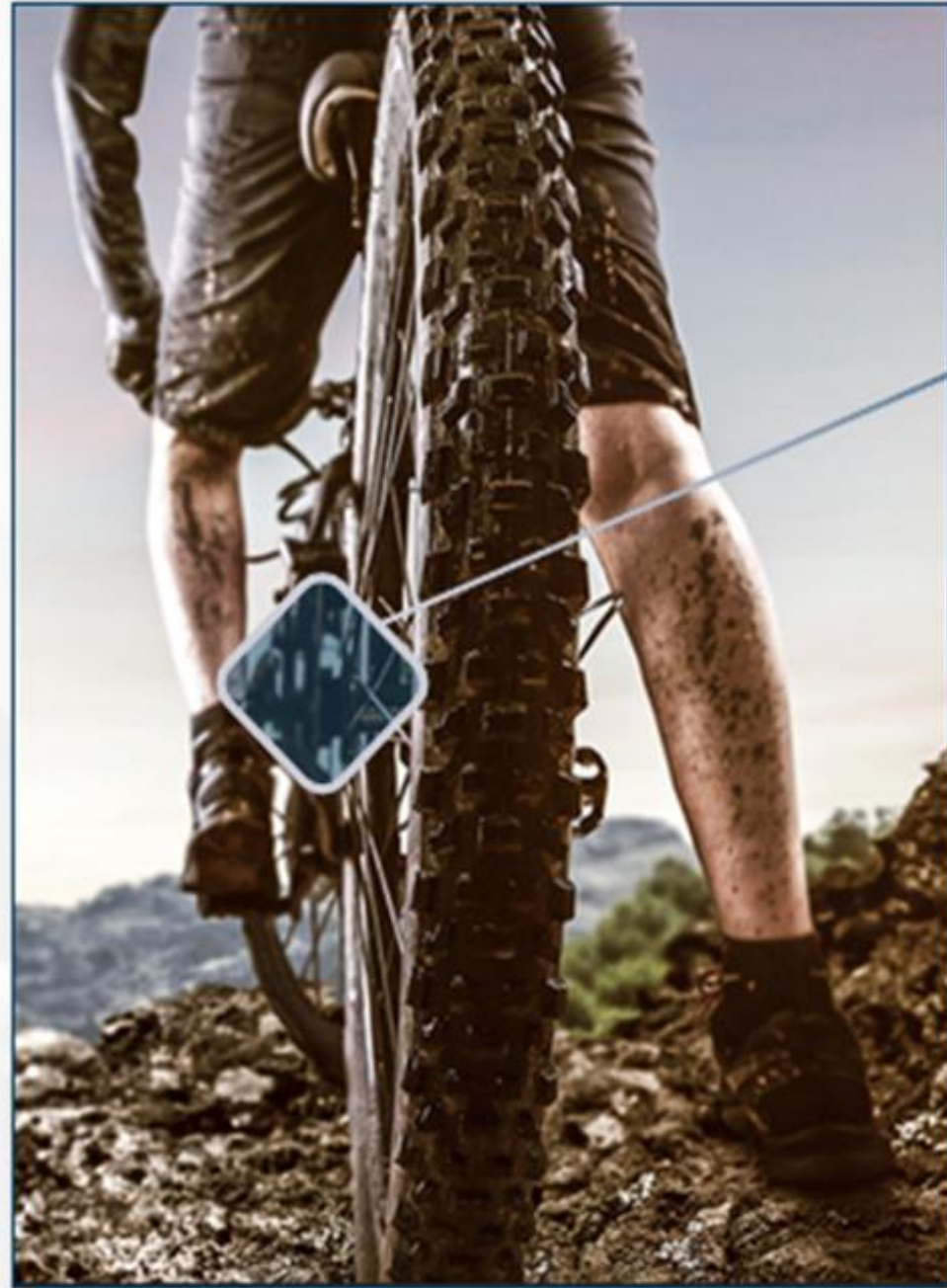


Project info:

- ◆ Project name: Motor interface for in-wheel steering systems
- ◆ Technology: Hi-tech, hi-voltage electronics
- ◆ Annual production: 2,500 pcs
- ◆ Production status: On order



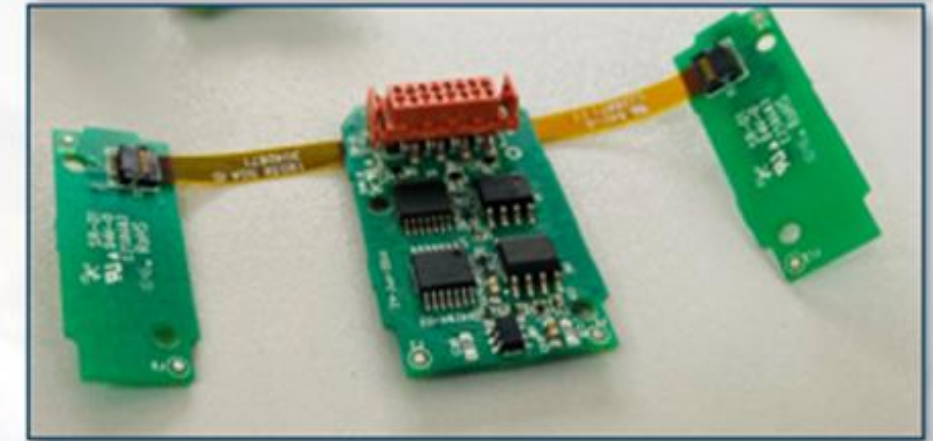
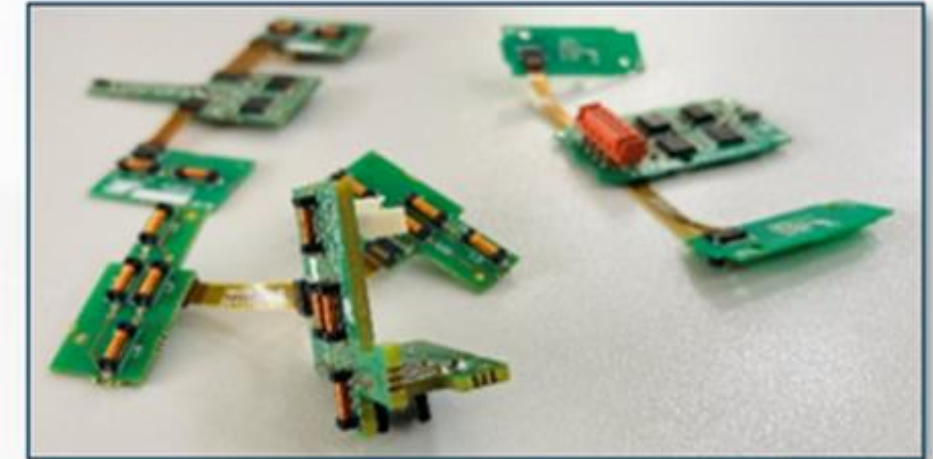
PRODUCT PORTFOLIO HIGHLIGHTS



e-Bike



Other models

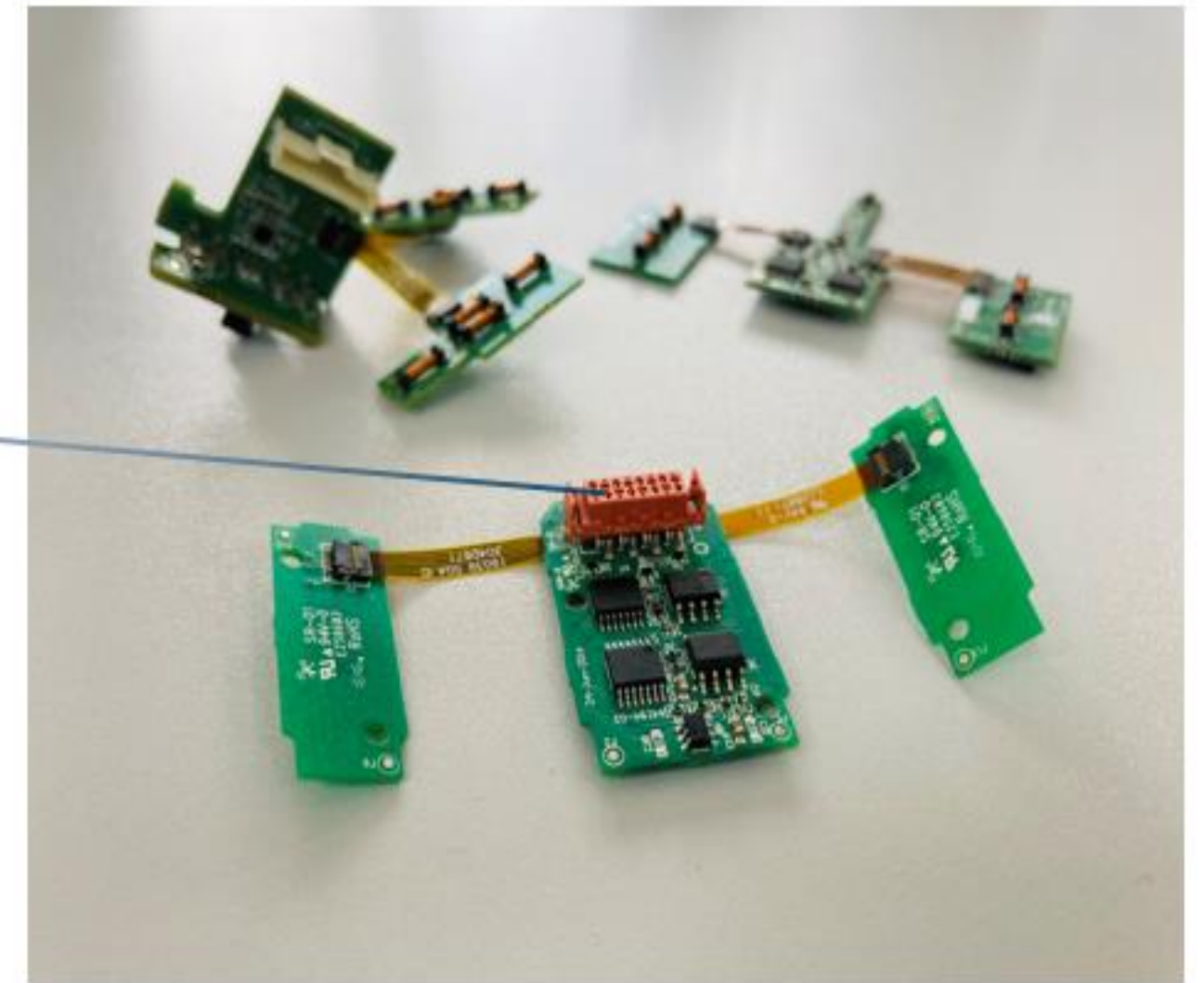


Project info:

- ✦ Project name: E-bike electronics - Torque Sensor
- ✦ Annual production: 100,000 pcs
- ✦ Production status: Active/serial production



PRODUCT PORTFOLIO HIGHLIGHTS



Continental e-Bike

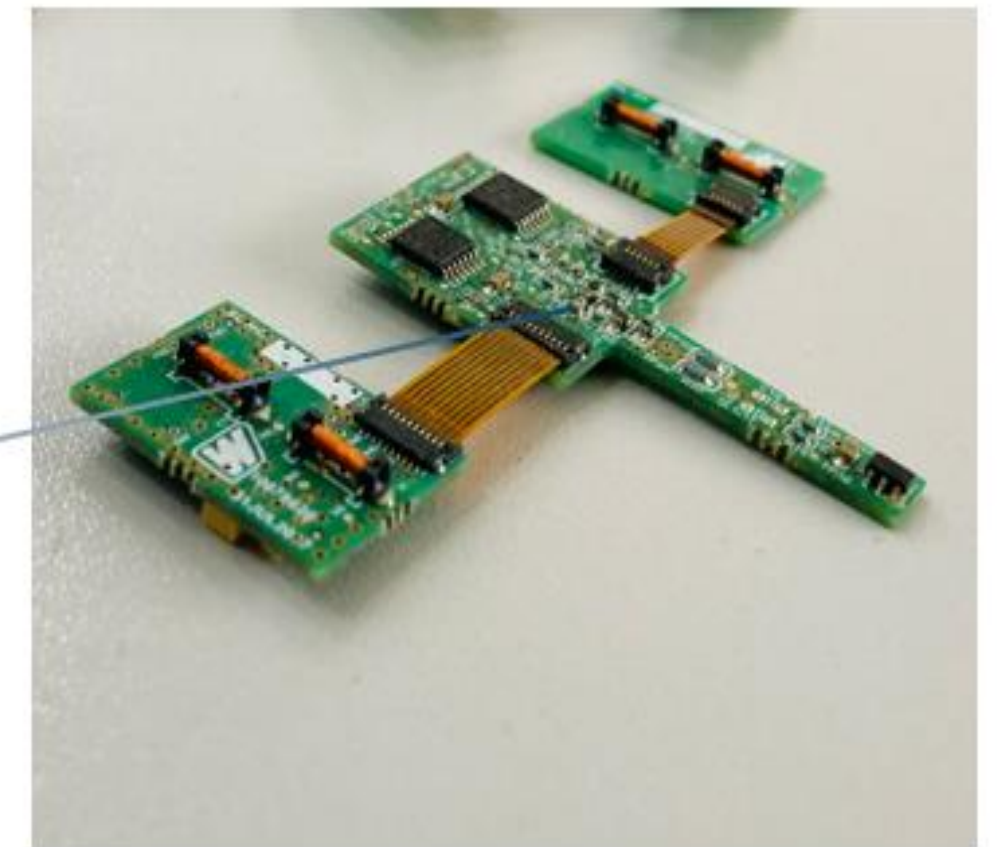
Project info:

- ◆ Project name: bike electronics - Torque Sensor
- ◆ Annual production: 60,000 pcs
- ◆ Production status: On customer order.



PRODUCT PORTFOLIO HIGHLIGHTS

ECULT



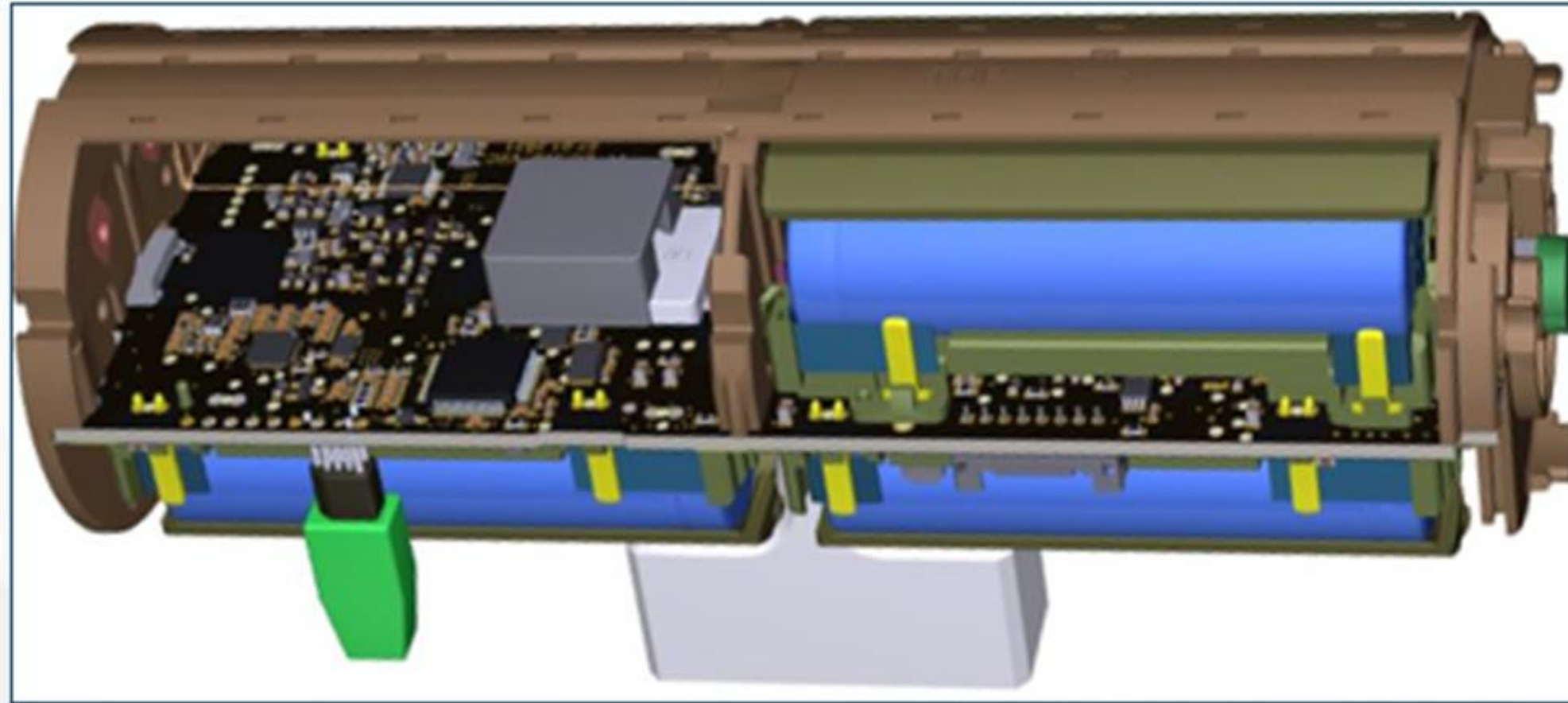
DOMEL ECULT e-Bike

Project info:

- Project name: Methode - Torque Sensor Bike electronics
- Annual production: 50,000 pcs
- Production status: On customer weekly chedule demand orders.

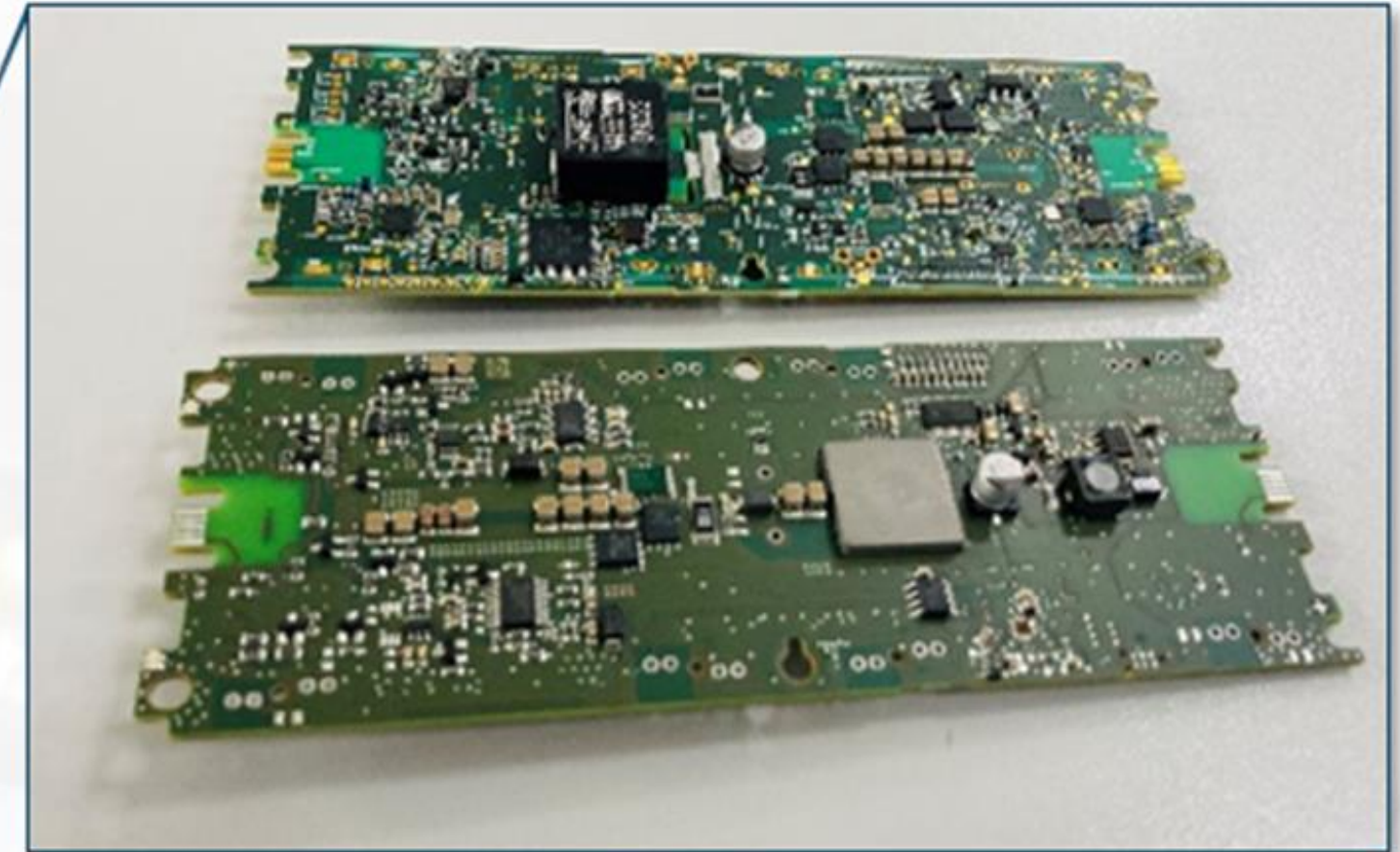


PRODUCT PORTFOLIO HIGHLIGHTS



Unicorn energy

Energy Tube

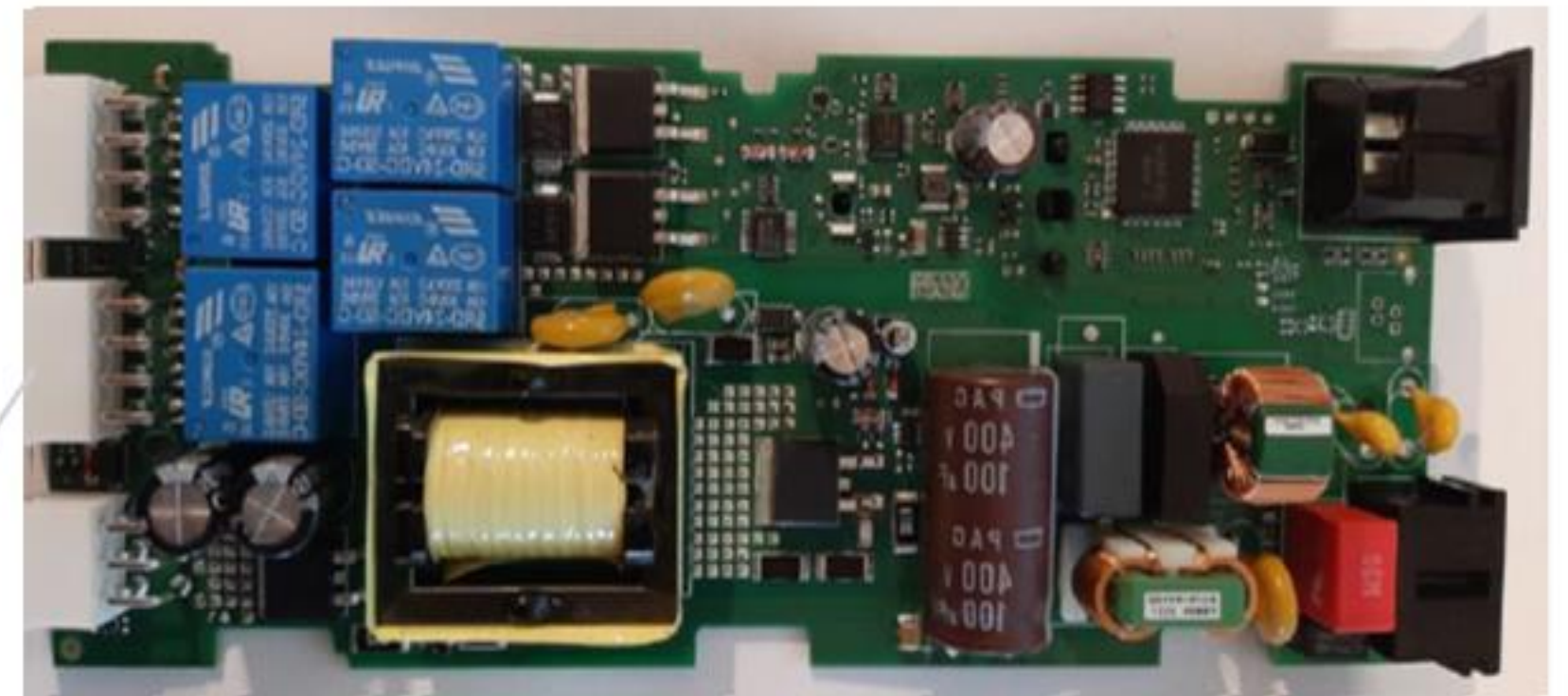


Project info:

- ✦ Project name: Battery tube
- ✦ Annual production: 3,000 pcs
- ✦ Production status: Active/serial production



PRODUCT PORTFOLIO HIGHLIGHTS



LOGICDATA - SMART Neo 2G



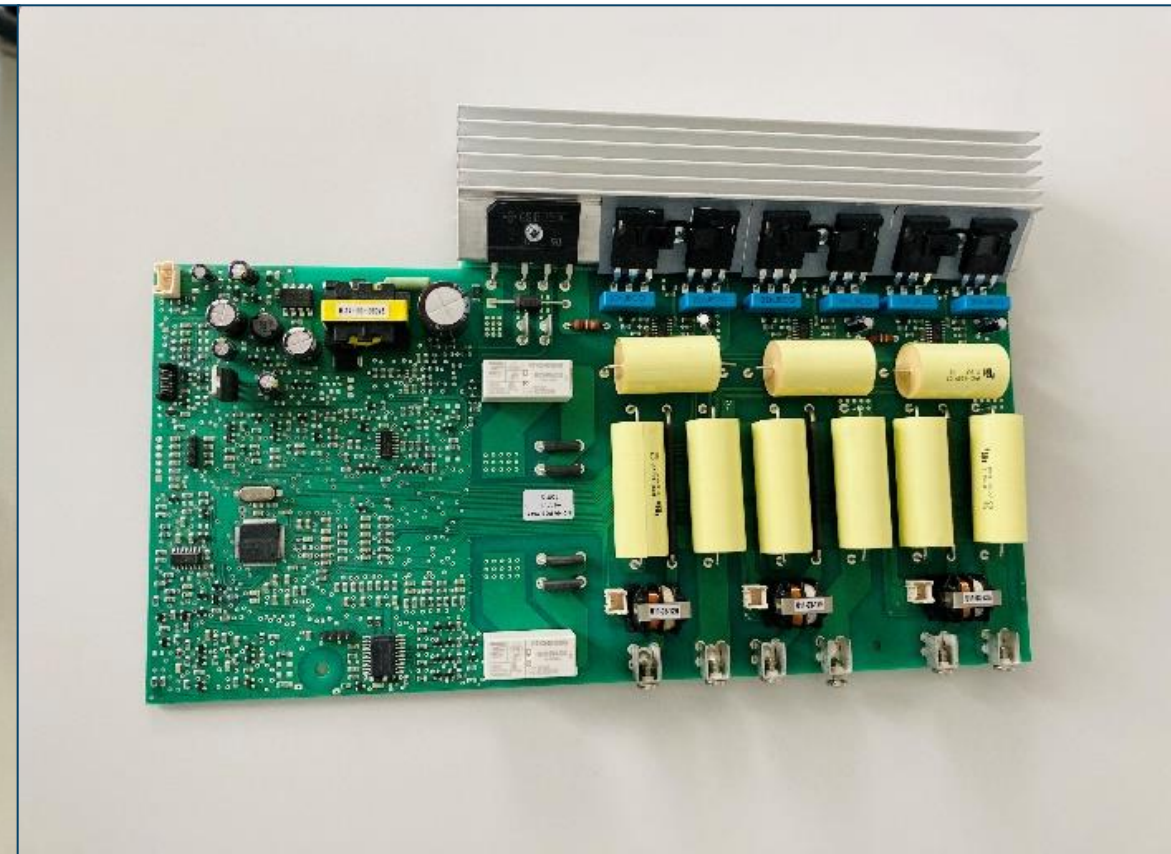
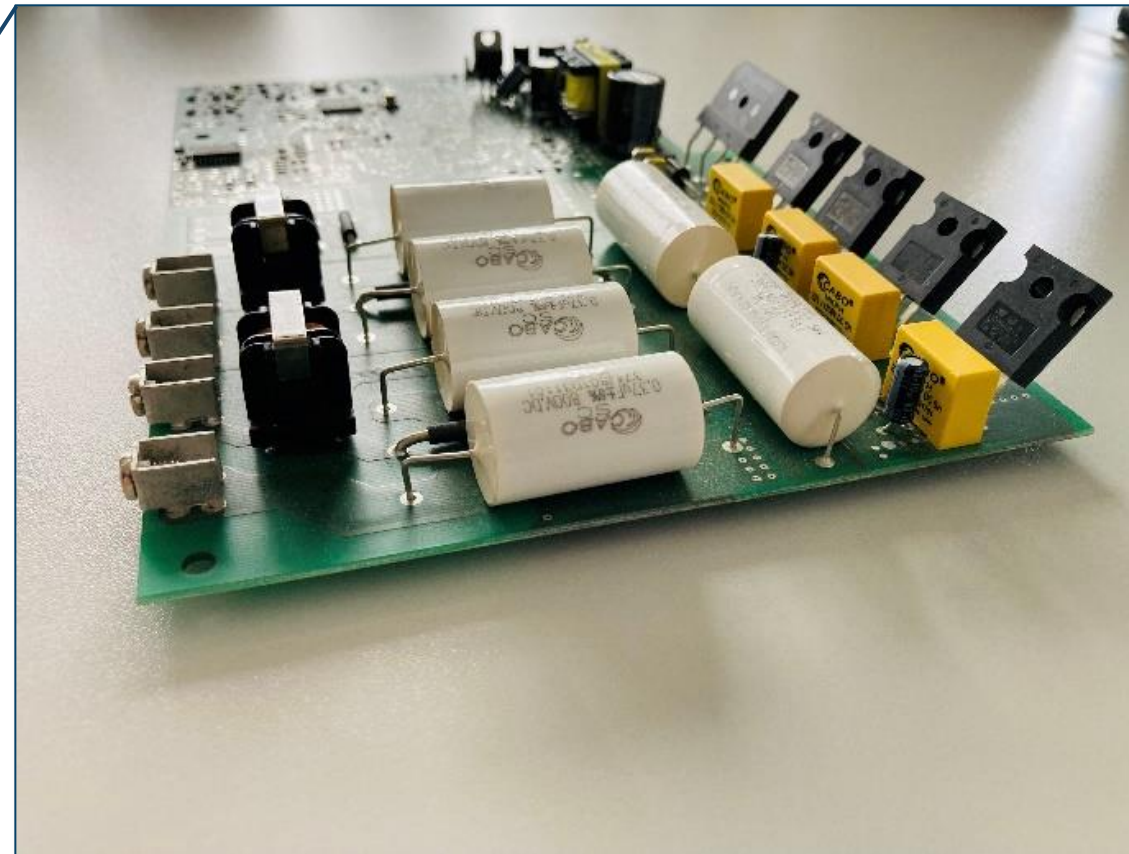
Project info:

- ◆ Project name: Control box adjustable height system
- ◆ Technology: Hi-tech motion electronics
- ◆ Annual production: 180,000 pcs
- ◆ Production status: Active/serial production

SMART FURNITURE SYSTEMS



Induction board

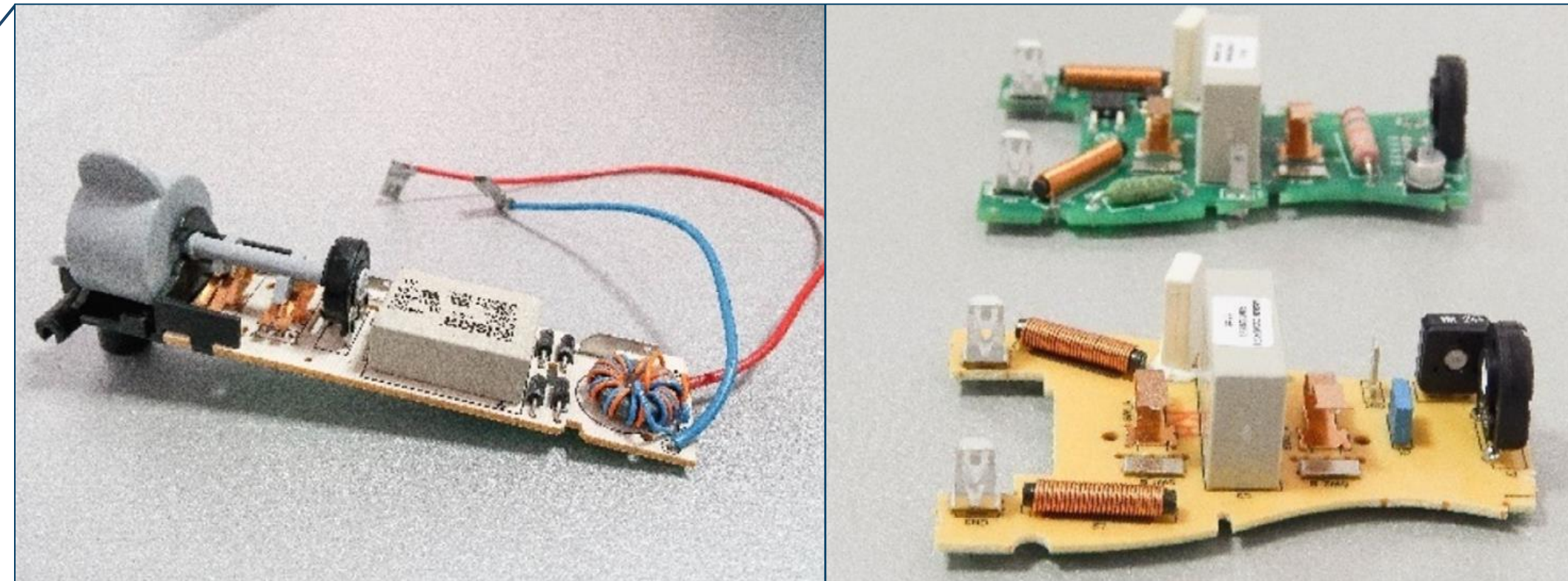


Project info:

- ◆ Project name: Induction board electronics
- ◆ Annual production: 5,000 pcs
- ◆ Production status: On request



For OEM customers



Project info:

- ◆ Project name: PCB for small appliances
- ◆ Annual production: 100,000 pcs
- ◆ Production status: Active



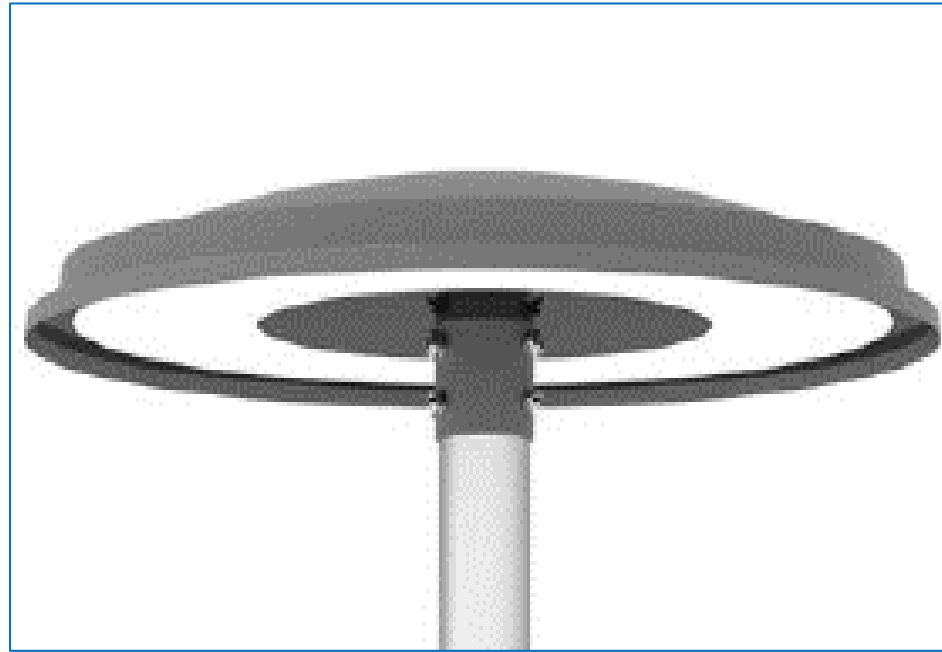
Aerolite LSL-ECO

Basic product information

Sizes: S | M | L

- ◆ IK09 or IK10 shock and impact resistance (PMMA)
- ◆ IP66 ingress protection rate
- ◆ Aluminum alloy





Dima

Basic product information

- ◆ IK09 shock and impact resistance
- ◆ IP65 ingress protection rate
- ◆ Deep drawn steel housing



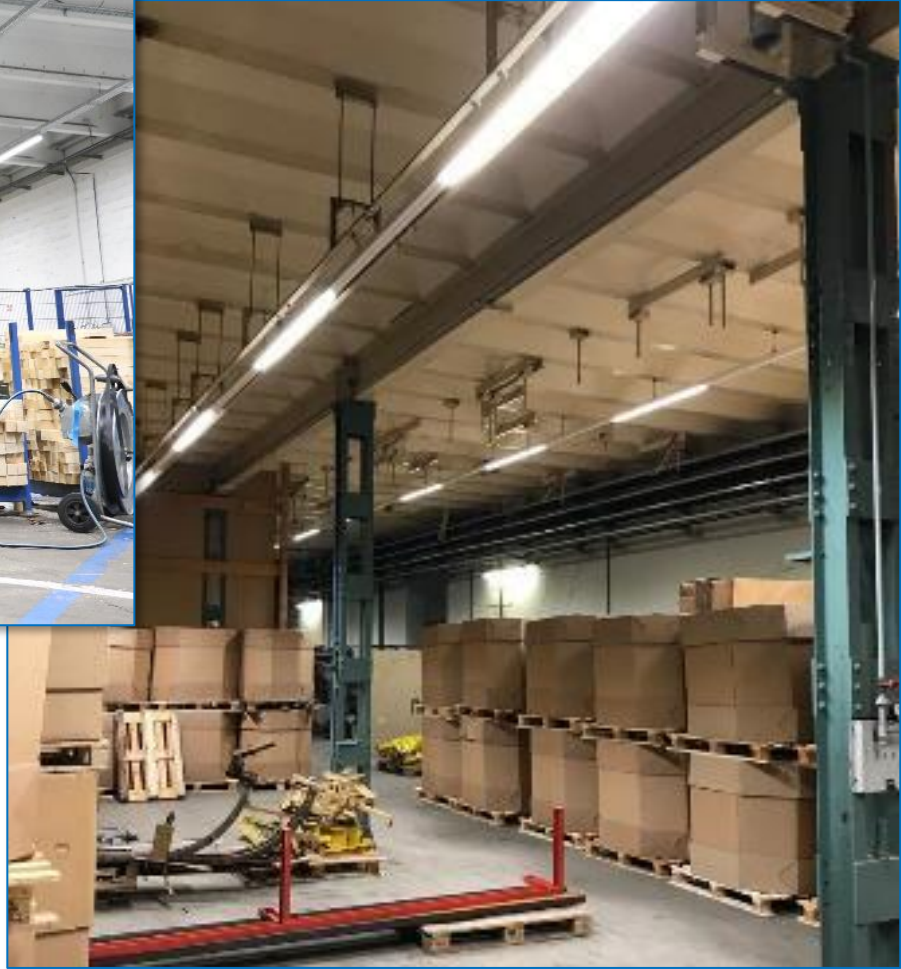
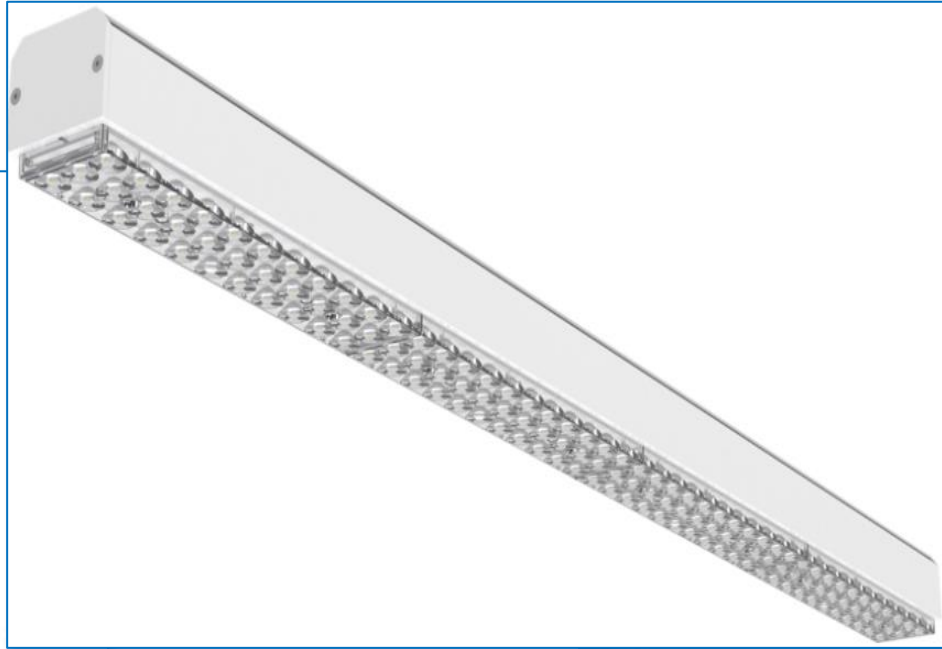


Terralite ECO

Basic product information

- ◆ IK09 shock and impact resistance
- ◆ IP65 ingress protection rate
- ◆ Deep drawn steel
- ◆ TG cover





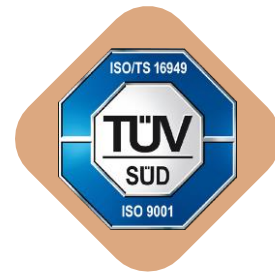
Impervius & Bix

Basic product information:

- ◆ IP65 ingress protection rate
- ◆ PC or PMMA cover
- ◆ IK08 shock and impact resistance
- ◆ IP40 ingress protection rate
- ◆ Aluminum housing
- ◆ Direct/indirect lighting



CERTIFICATION



CERTIFICATE 

This is to certify that

SG Automotive d.o.o.
Industrijska cesta 12
3210 Slovenske Konjice
Slovenia
IATF USI T6HTCG

has implemented and maintains a **Quality Management System**.

Scope:
Manufacture of electronic parts and assembly (plastic, electronic and wire harnesses)

An audit, conducted and documented in a report, has verified that this quality management system fulfills the requirements of the following International Automotive Standard:

IATF 16949:2016
(without product design)

Certificate registration no.	31150632 IATF16	
Issuing date	2024-07-13	
This certificate is valid until	2027-07-12	
IATF No.	0530492	

2-IAO-QMC-01001

For and on behalf of DQS


Nurani S. Venkatchalam
Director-Corporate Automotive Program, DQS Holding GmbH


Michael Drechsel
Managing Director, DQS Holding GmbH



IATF Contract Office: DQS Holding GmbH, Konrad-Adenauer-Allee 8-10, 61118 Bad Vilbel, Germany
The validity of the certification can only be verified by the QR code.

CERTIFICATE 

This is to certify that

SG Automotive d.o.o.
Industrijska cesta 12
3210 Slovenske Konjice
Slovenia

has implemented and maintains a **Quality Management System**.

Scope:
Manufacture of electronic parts and assembly (plastic, electronic and wire harnesses)

Through an audit, documented in a report, it was verified that the management system fulfills the requirements of the following standard:

ISO 9001 : 2015

Certificate registration no.	31150632 QM15	
Valid from	2024-07-13	
Valid until	2027-07-12	
Date of certification	2024-07-13	



DQS GmbH


Christian Gerling
Managing Director



Accredited Body: DQS GmbH, August-Schanz-Strasse 21, 60483 Frankfurt am Main, Germany
Administrative Office: DQS Slovakia s.r.o., Ruznicko 8, 010 08 Žilina, Slovakia
The validity of the certification can only be verified by the QR code.

CERTIFICATE 

Certificate Registration No.: 12 104 7830 TMS / Order No.: MS201000231

The Certification Body of TUV SUD Management Service GmbH certifies that the organization

SG AUTOMOTIVE

SG Automotive d.o.o.
Industrijska cesta 12
3210 Slovenske Konjice
Republic of Slovenia

for the scope

Manufacturing and sales of electronic parts and assembly (plastic, electronic and wire harnesses)

has established and applies an Environmental Management System. An audit was performed and has furnished proof that the requirements according to

DIN EN ISO 14001:2015

are fulfilled.

The certificate is valid from 2024-06-21 until 2027-06-20.


Fred Wenke
Head of Certification Body
Munich, 2024-05-08





TUV SUD Management Service GmbH • Zertifizierungsstelle • Ridlerstrasse 57 • 80338 München • Germany
www.tuvsud.com/de/certificate-validity-check

CCAP 中汽认证中心有限公司
CHINA CERTIFICATION CENTRE FOR AUTOMOTIVE PRODUCTS CO., LTD.

Notice of Maintaining the Validity of Certification
CCAP Reference No. 20240911090311Q1J2

Factory: SG AUTOMOTIVE, d.o.o.
The follow-up inspection of your factory in 2024 has been accomplished. We approve the validity of your certificates till next follow-up inspection.
Certificate No:
CCAP2017091109008342, CCAP2018091109008645, CCAP2018091109008646

Director: 马麟

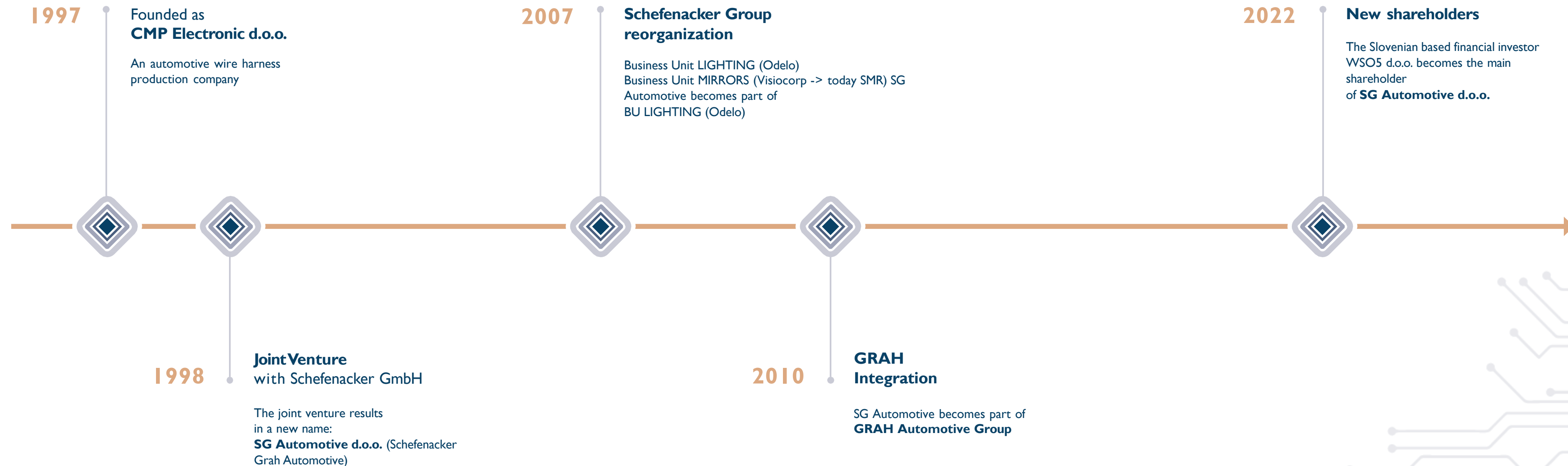


China Certification Centre for Automotive Products Co., Ltd.

联系人 (Contact) : Chen Wei (Winnie)
电话 (Tel) : +86-010-88301742
邮箱 (E-mail) : chenwei@cccap.org.cn

Add : 11FL Office Bld., No. 2 Shouti South Rd., Haidian District, Beijing P. R. China 100044
E-mail: chenwei@cccap.org.cn Website: http://www.ccap.org.cn
Tel: +86-010-88301742

> KNOW-HOW & EXPERIENCE SINCE THE ADVENT OF LED TECHNOLOGY IN VEHICLE LIGHTS



Thank you!

📍 Industrijska cesta 12
SI-3210 Slovenske Konjice,
Slovenia, Europe

✉ info@sga.si

☎ +386 3 757 16 50



LinkedIn

www.sga.si

